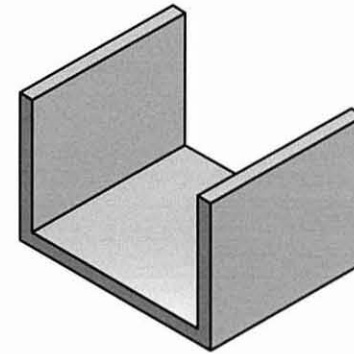
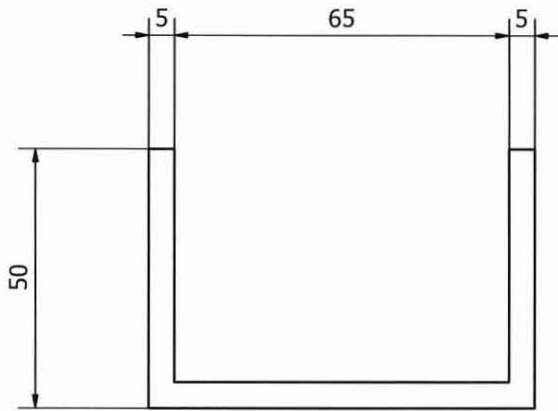
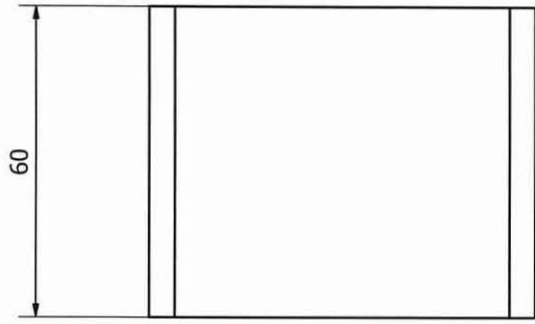
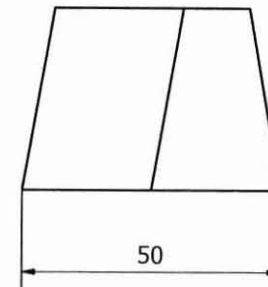
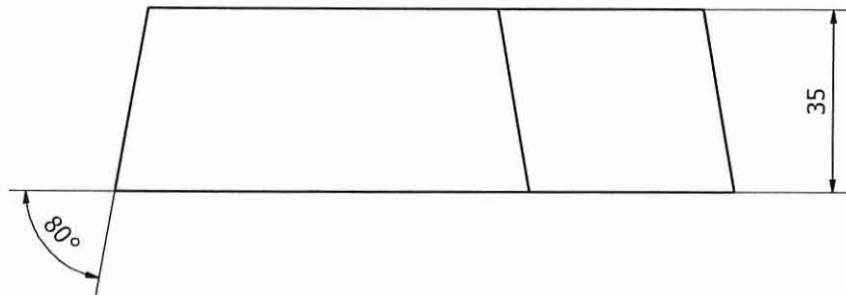
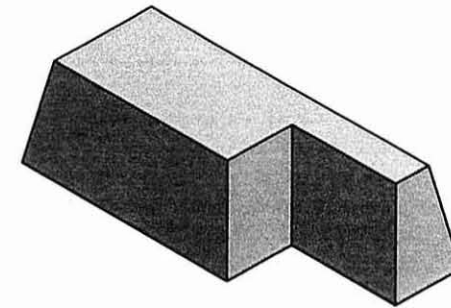
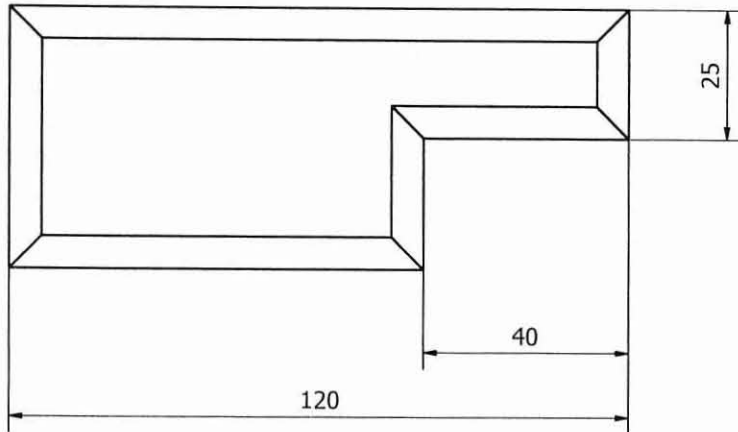


MOUNT DRUITT COLLEGE OF TAFE			
DETAIL DRAFTING			
	DRAWN	P.S.	BLOCK
	CHECKED		
	DATE	20:07:2009	SCALE
			DRAWING NO
			INV_EX00A

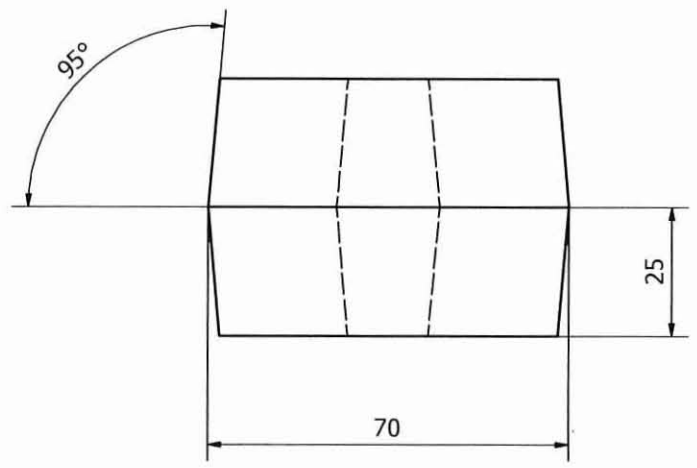
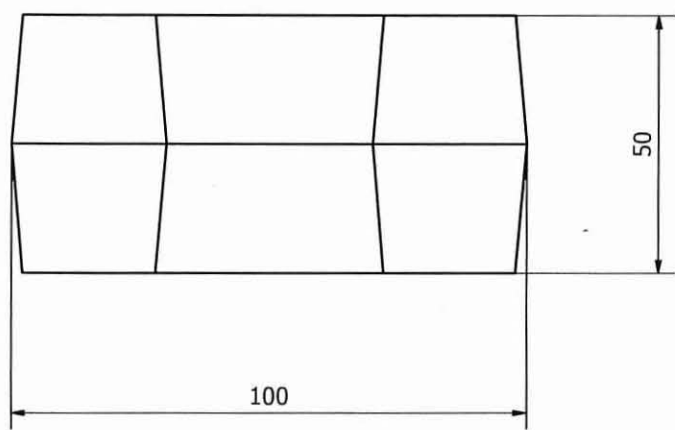
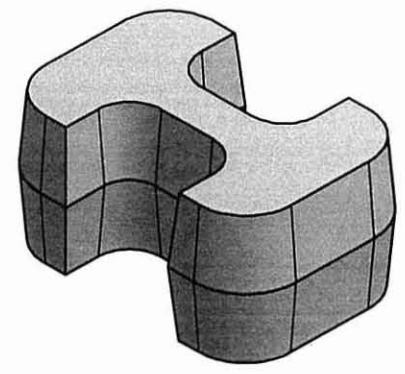
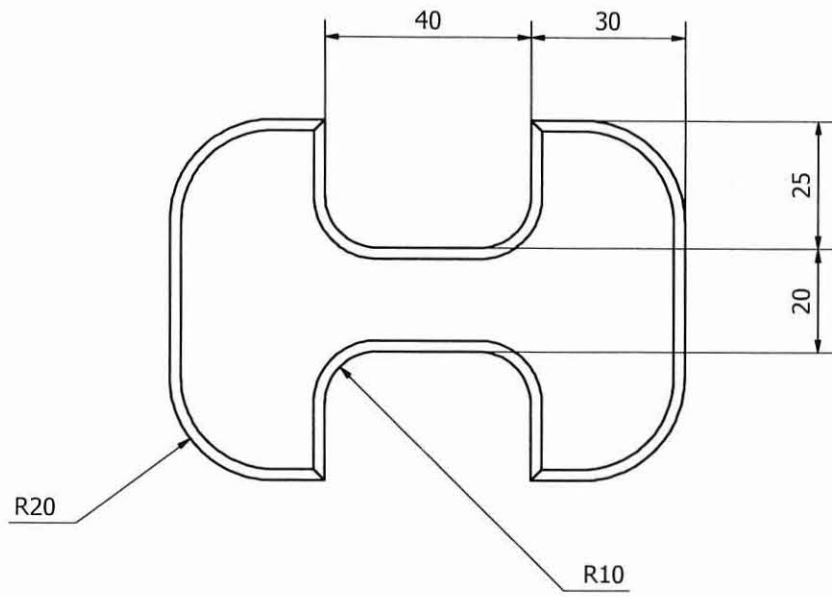


<b>MOUNT DRUITT COLLEGE OF TAFE</b> DETAIL DRAFTING			
	DRAWN	P.S.	<b>U BLOCK</b>
	CHECKED		
	DATE	20:07:2009	SCALE
			DRAWING NO INV_EX00B

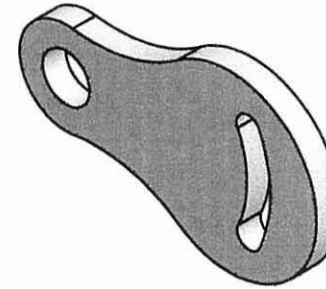
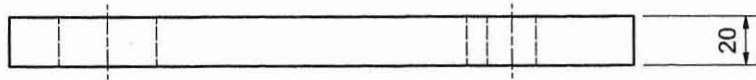
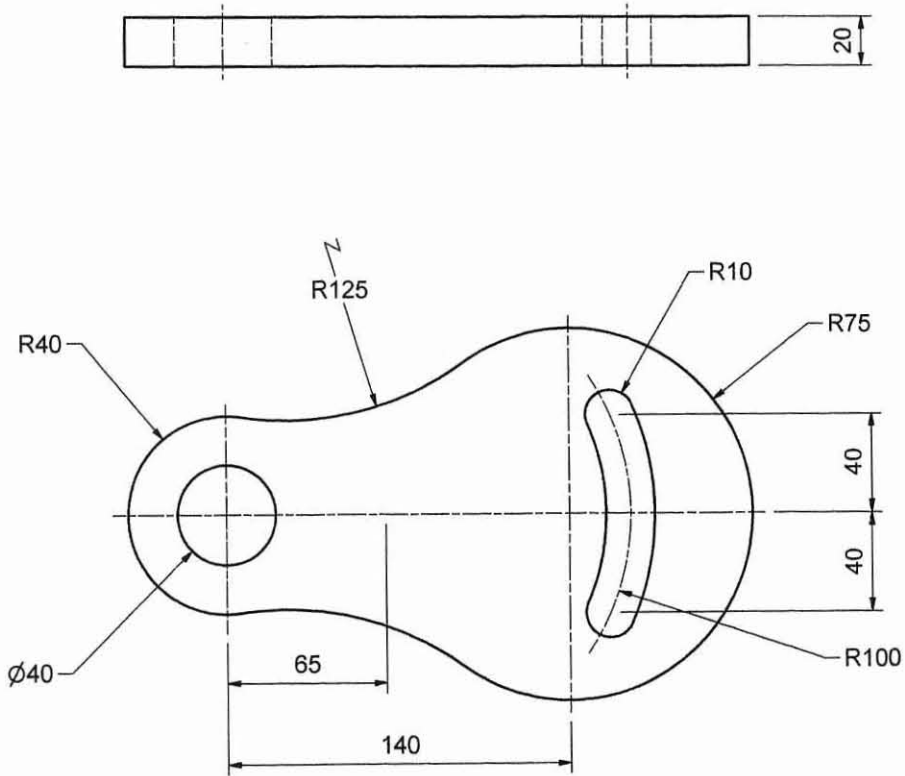


<b>MOUNT DRUITT COLLEGE OF TAFE</b> DETAIL DRAFTING			
	DRAWN	P.S.	
	CHECKED		
	DATE	20:07:2009	SCALE
		DRAWING NO	
		INV_EX01	

**BEVELLED BLOCK**

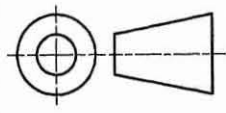


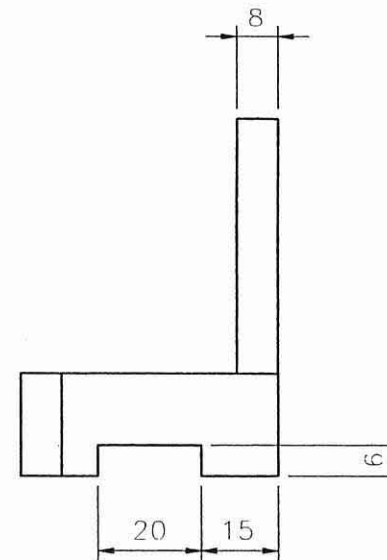
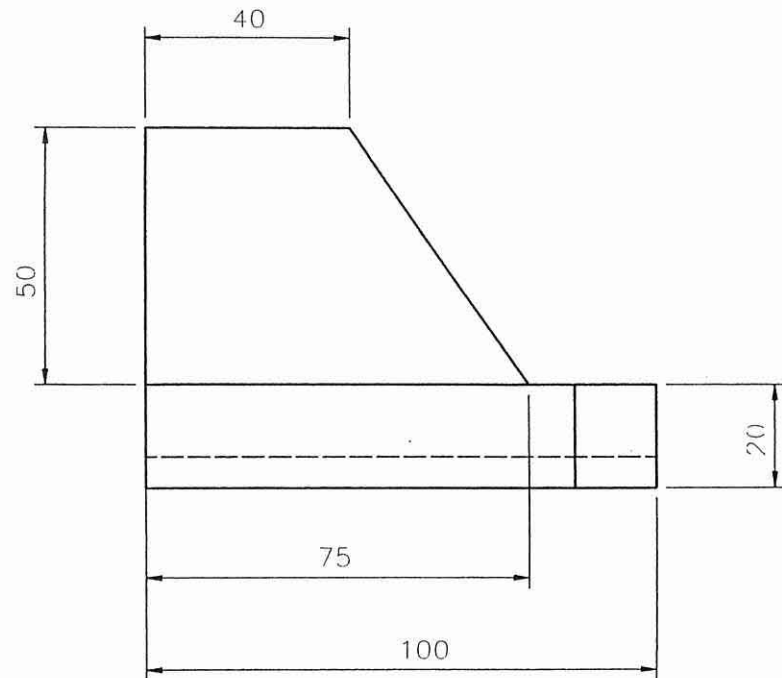
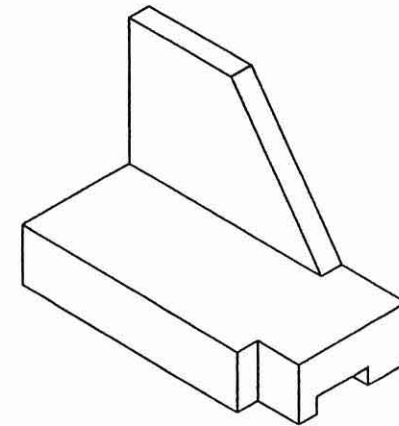
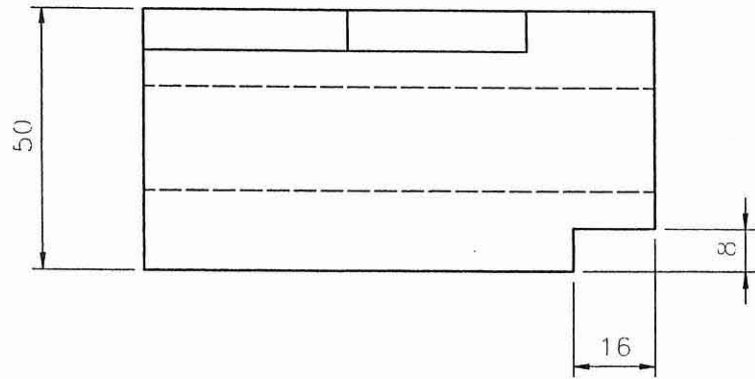
<b>MOUNT DRUITT COLLEGE OF TAFE</b> DETAIL DRAFTING			
	DRAWN	P.S.	
	CHECKED		
	DATE	20:07:2009	SCALE
		<b>I BLOCK</b>	
		DRAWING NO	INV_EX02



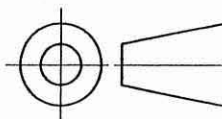
PRODUCED BY AN AUTODESK EDUCATIONAL PRODUCT

PRODUCED BY AN AUTODESK EDUCATIONAL PRODUCT

MOUNT DRUITT COLLEGE OF TAFE			
DETAIL DRAFTING			
	DRAWN	P.S.	TITLE
	CHECKED		SWIVEL PLATE
	DATE	22:07:2009	SCALE
		DRG. NO.	INV_EX03A

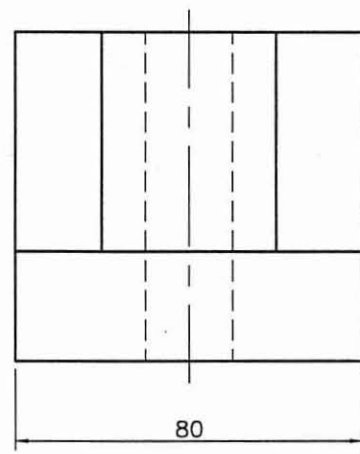
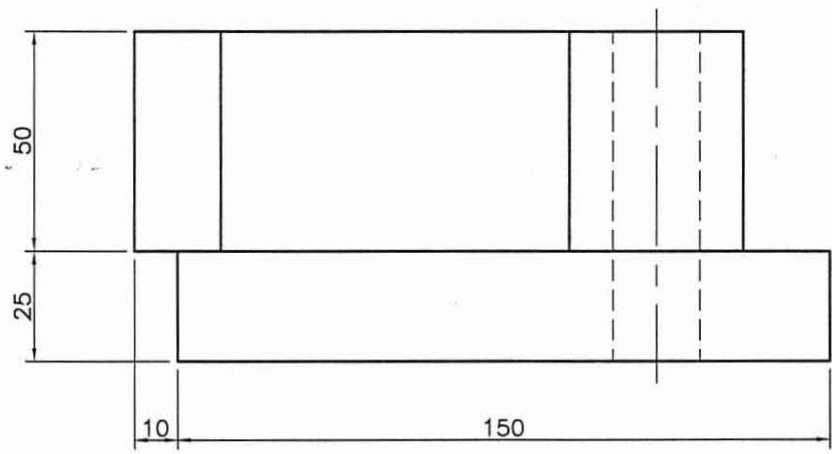
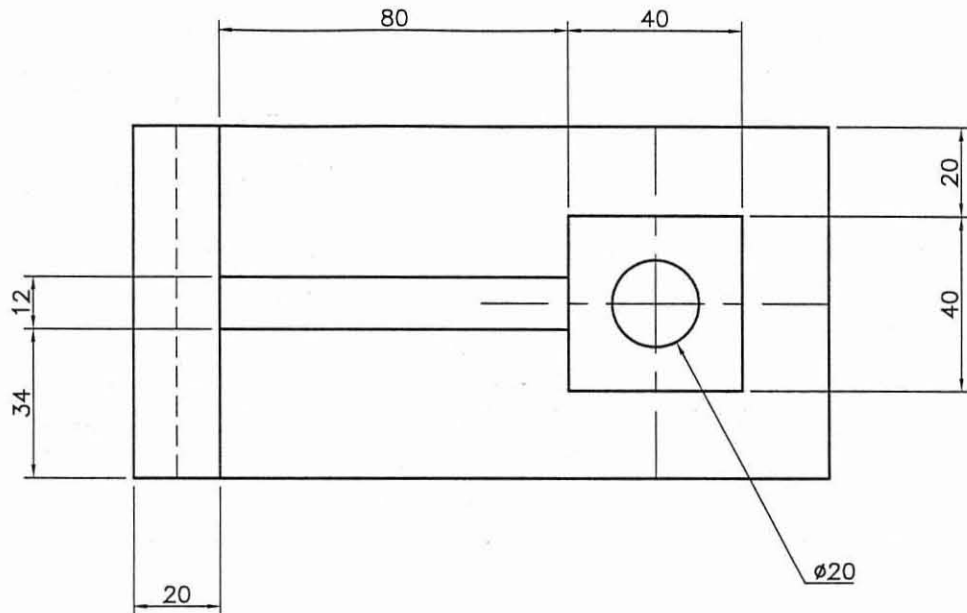


MOUNT DRUITT COLLEGE OF TAFE  
DETAIL DRAFTING

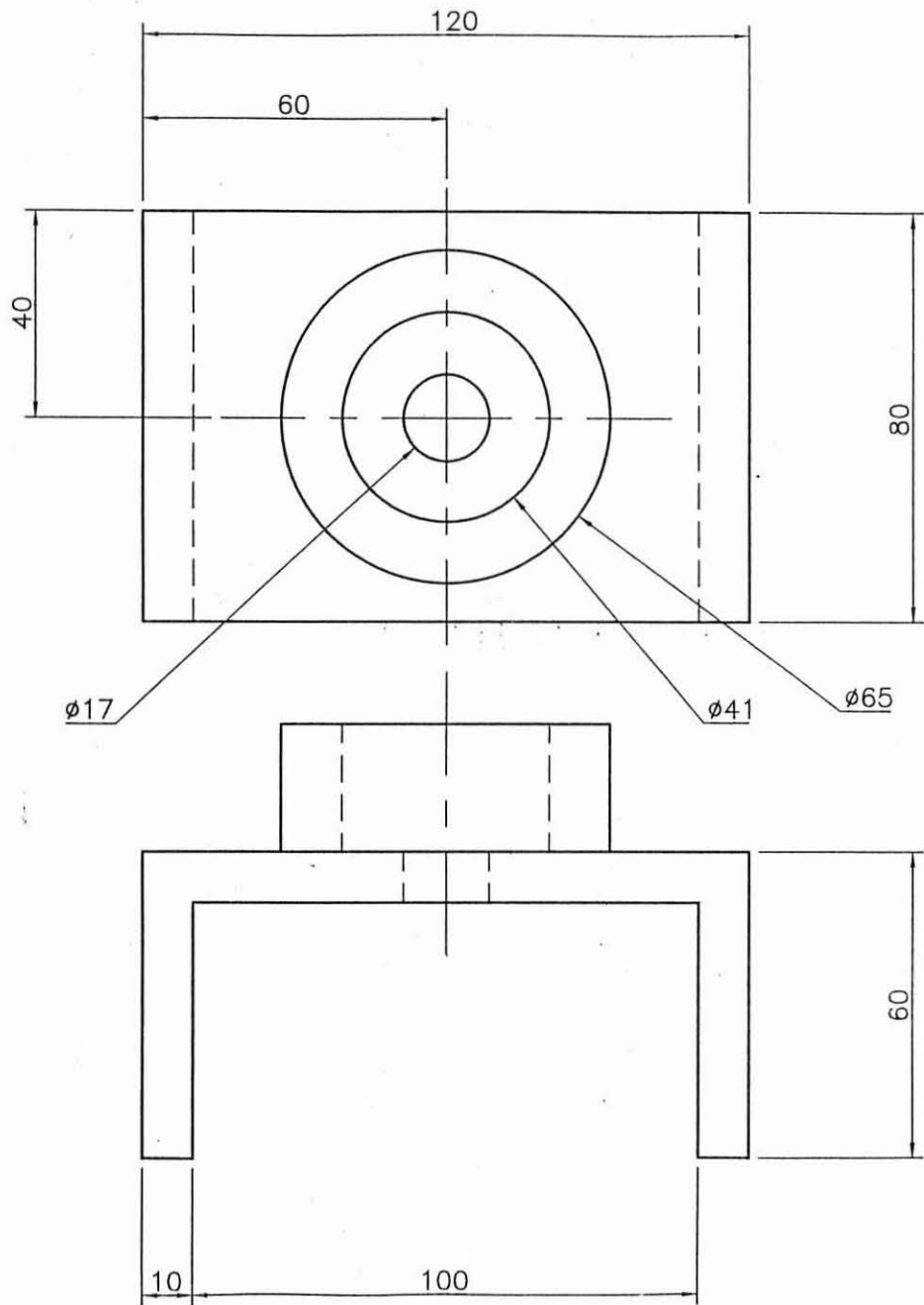


DESIGNER	P.S.
CHECKER	
DATE	26/07/03

TITLE	EXTRUSION EXERCISE
SCALE	1:1
FILE NO	EX_03

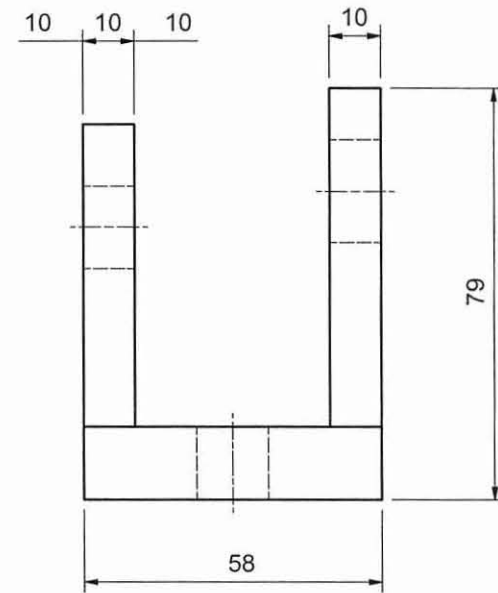
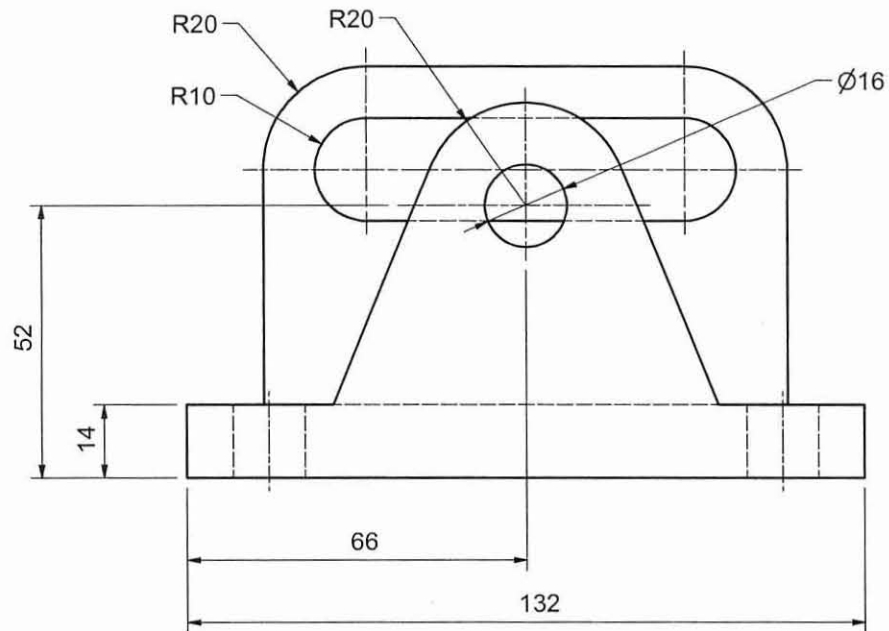
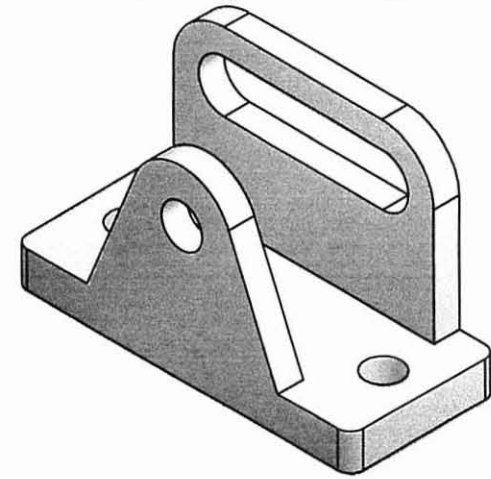
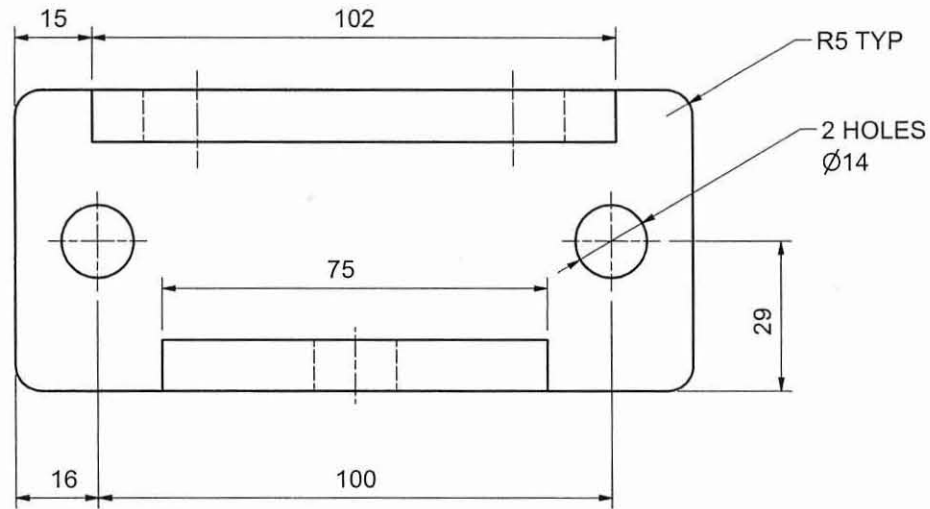


MOUNT DRUITT COLLEGE OF T.A.F.E.			
DETAIL DRAFTING			
	DRAWN	P.S.	TITLE
	CHECKED		BRACKET
	DATE	1:3:01	SCALE

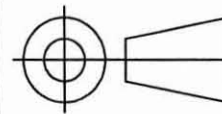


MOUNT DRUITT COLLEGE OF T.A.F.E			
DETAIL DRAFTING			
	DRAWN	P.S.	TITLE
	CHECKED		BEARING BRACKET
	DATE	1:3:01	SCALE
		DRG NUMBER	EXT_0319





MOUNT DRUITT COLLEGE OF TAFE  
DETAIL DRAFTING



DRAWN P.S.

TITLE

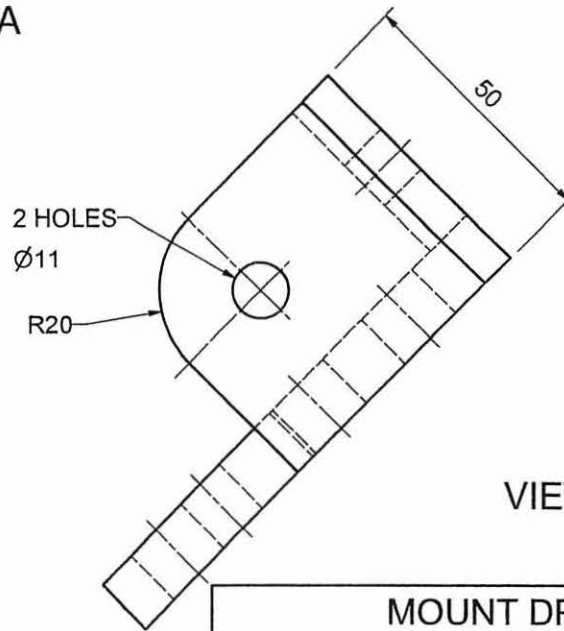
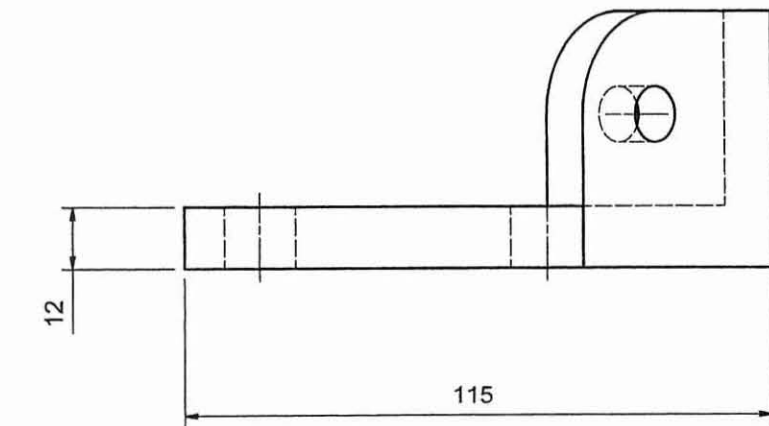
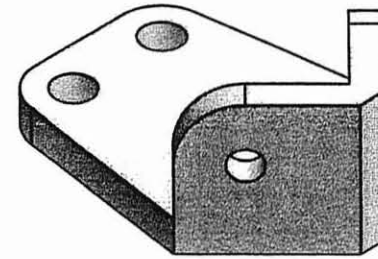
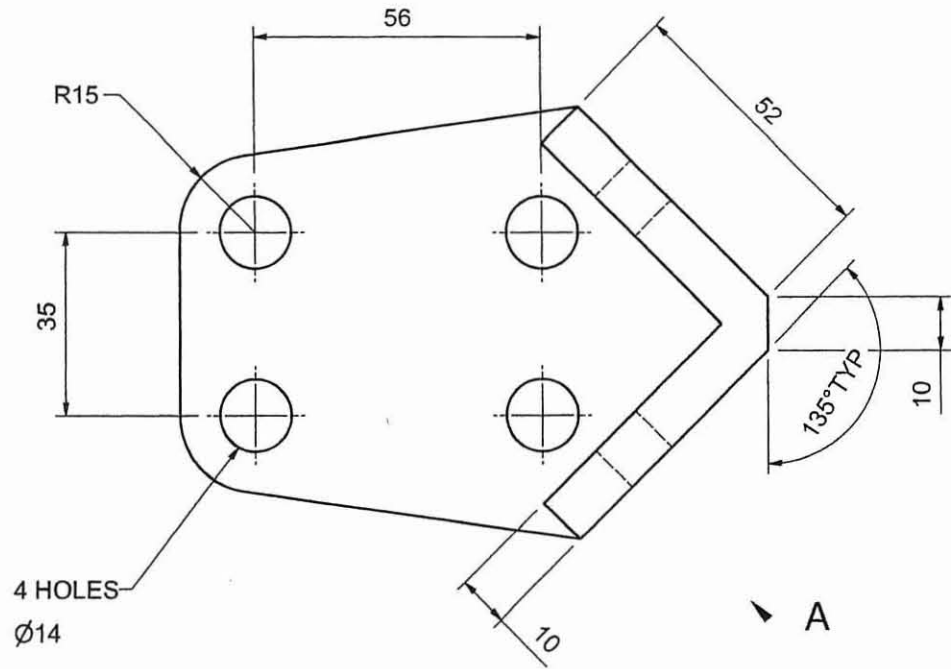
CHECKED

MOUNTING BLOCK

DATE 7:02:2005

SCALE 1:1

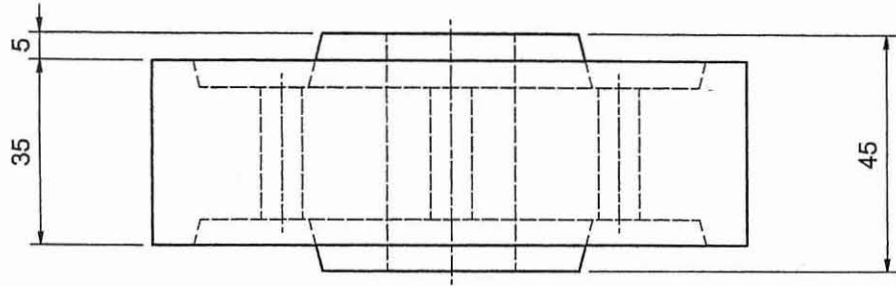
DRAWING No. EX\_04



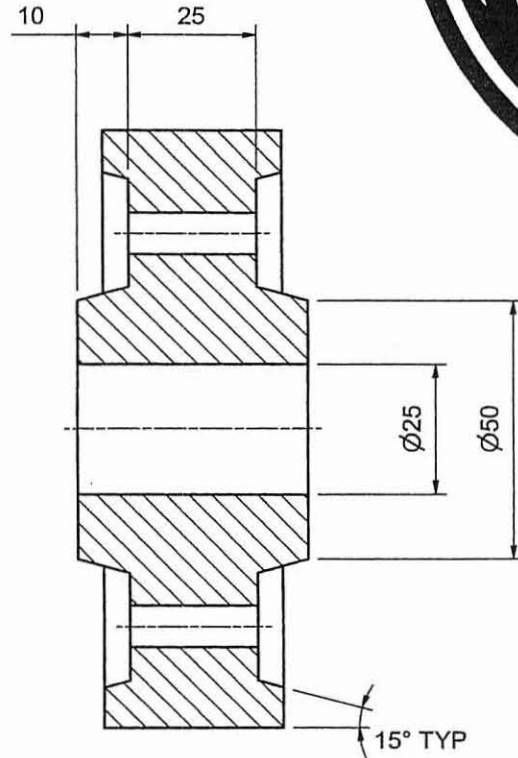
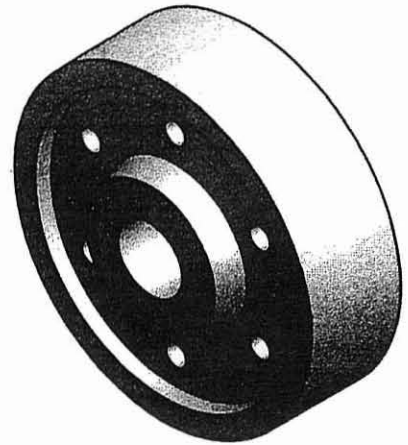
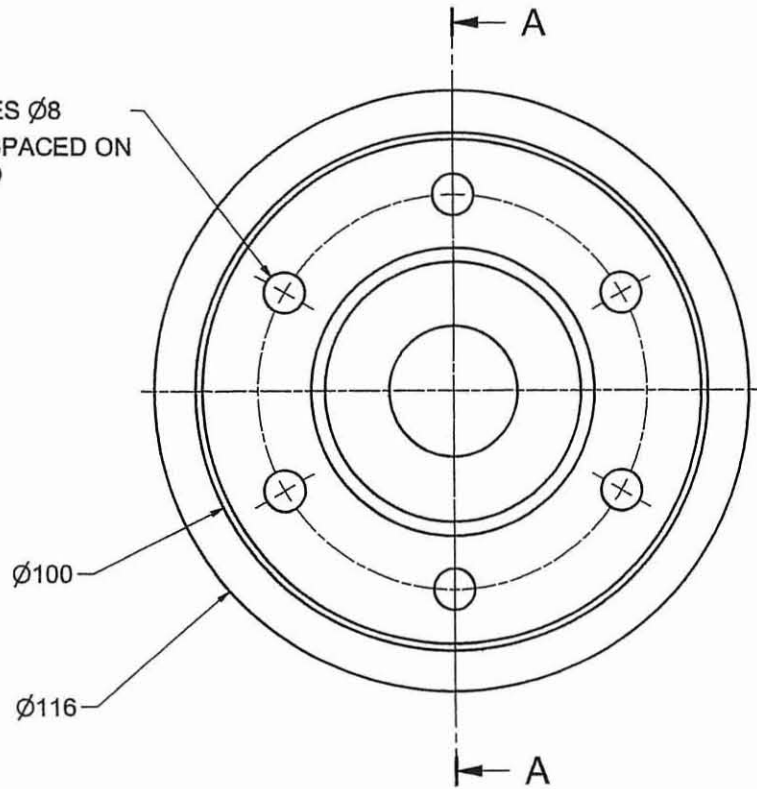
VIEW A

MOUNT DRUITT COLLEGE OF TAFE  
DETAIL DRAFTING

	DRAWN	P.S.	TITLE	
	CHECKED		MOUNTING BRACKET	
	DATE	7:02:2005	SCALE	1:1



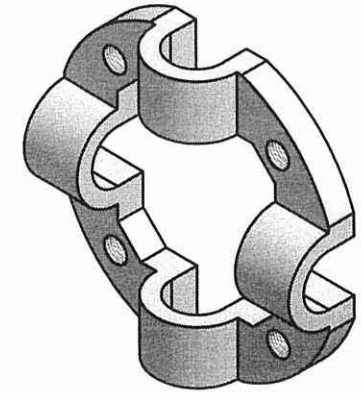
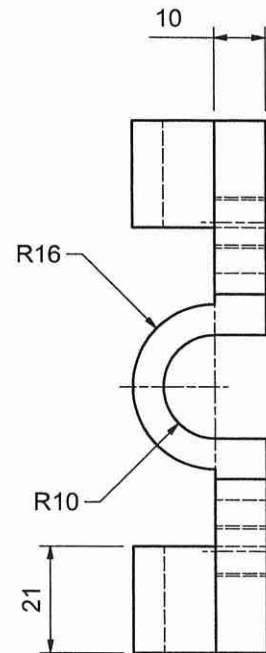
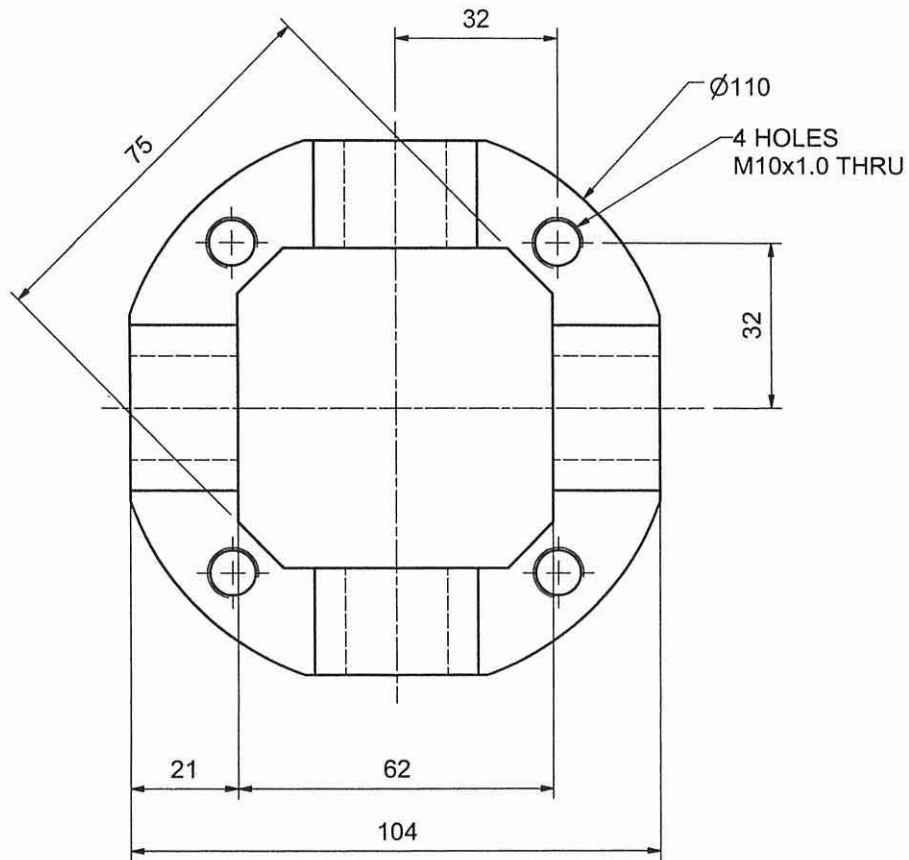
6 HOLES  $\varnothing 8$   
EQUI-SPACED ON  
75 PCD



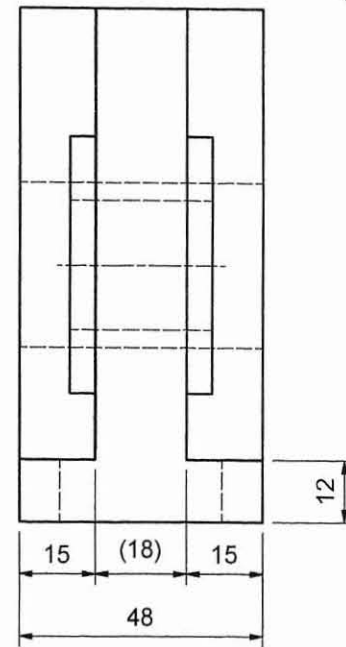
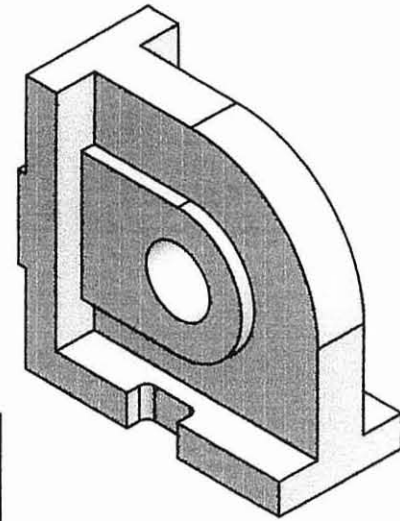
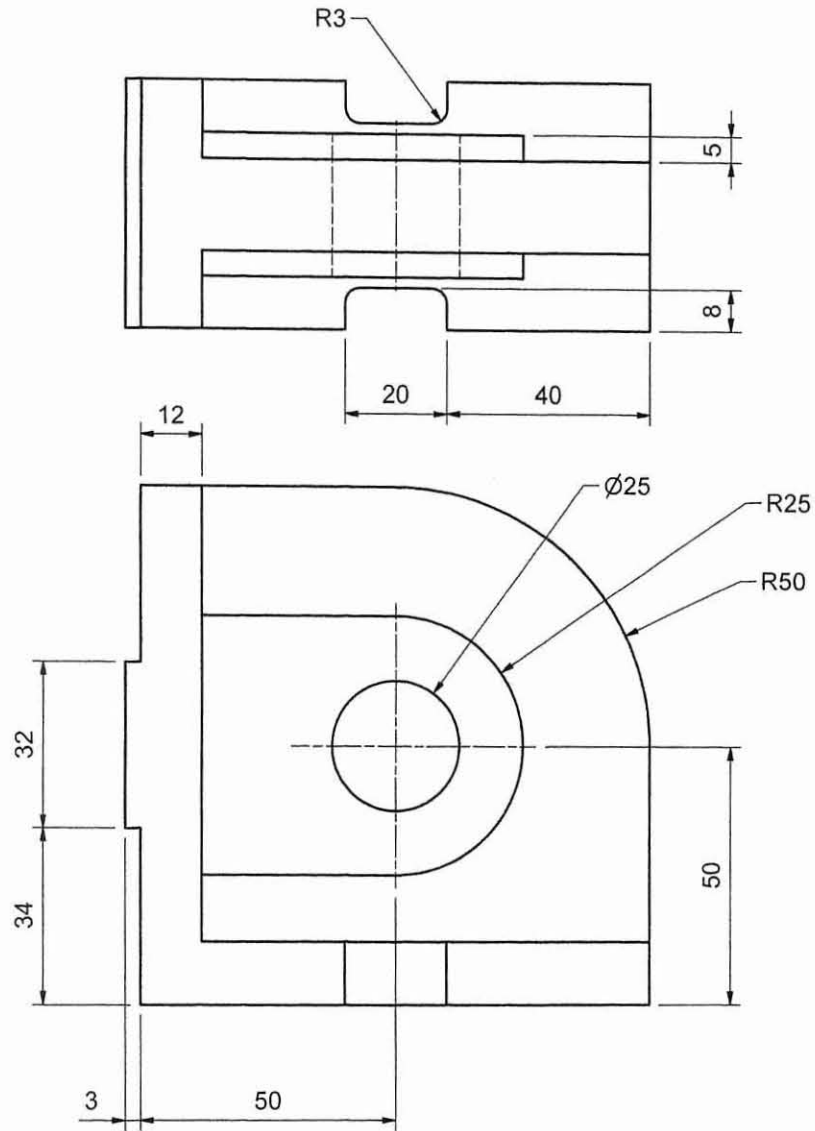
SECTION A-A

MOUNT DRUITT COLLEGE OF TAFE  
DETAIL DRAFTING

	DRAWN P.S.	TITLE	
	CHECKED	GUIDE ROLLER	
	DATE 21:02:2006	SCALE 1:1	DRG. NO. EX_06



<b>MOUNT DRUITT COLLEGE OF TAFE</b> DETAIL DRAFTING			
	DRAWN P.S.	TITLE <b>UNIVESAL JOINT PLATE</b>	
	CHECKED		
	DATE 21:02:2006	SCALE 1:1	DRG. NO. EX_07



MOUNT DRUITT COLLEGE OF TAFE			
DETAIL DRAFTING			
	DRAWN	P.S.	TITLE
	CHECKED		RIGHT ANGLE BRACKET
	DATE	2:08:2009	SCALE
		DRG. NO.	EX_08

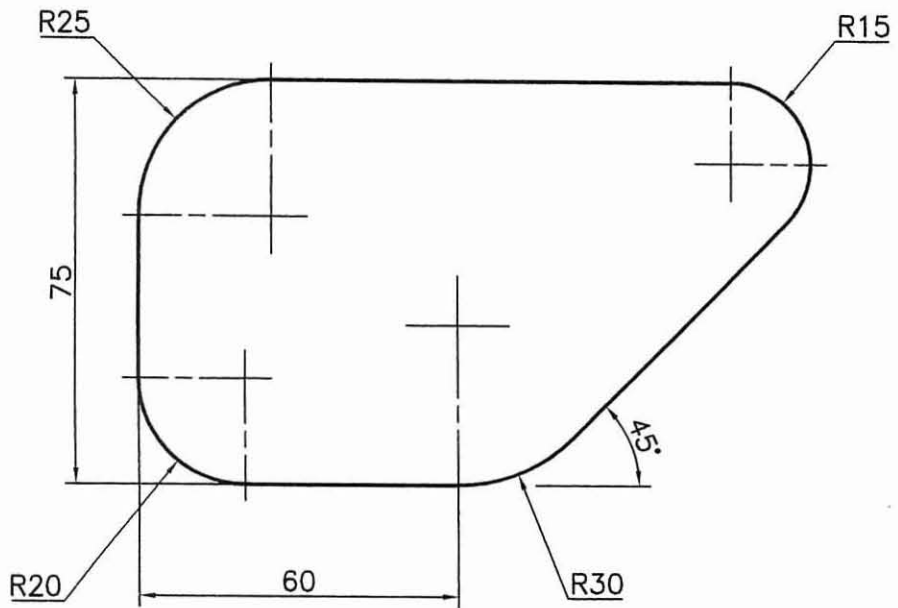


FIGURE 1

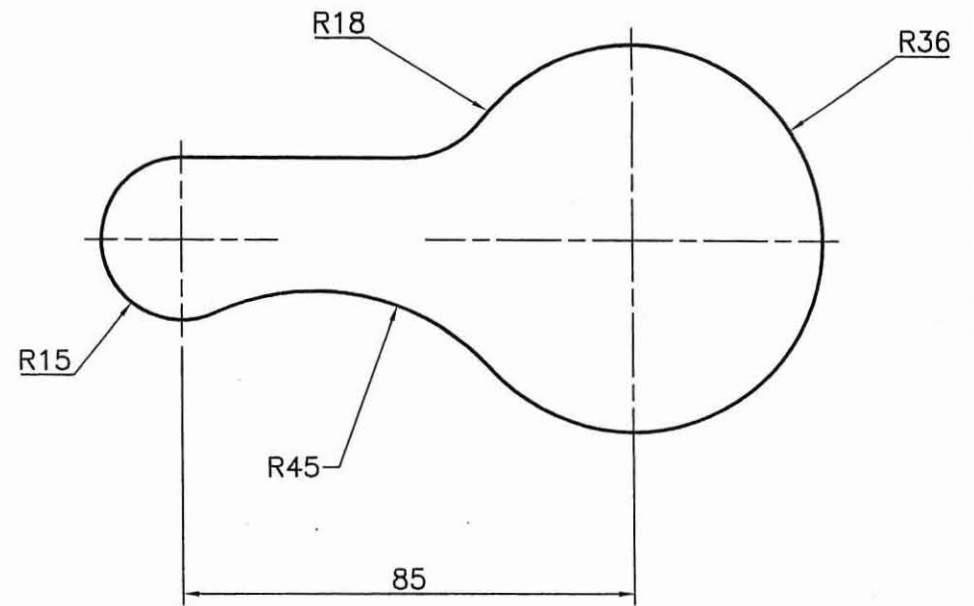


FIGURE 2

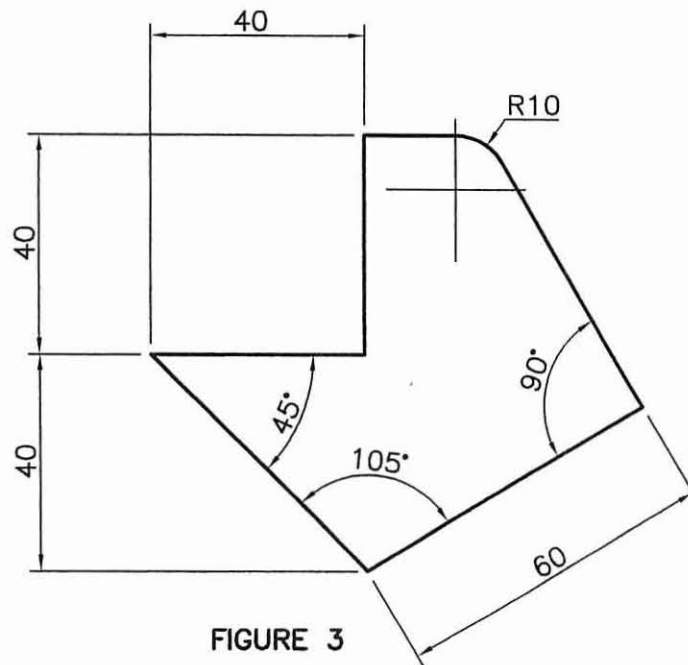


FIGURE 3

MOUNT DRUITT COLLEGE OF T.A.F.E			
DETAIL DRAFTING			
	DRAWN	P.S.	TITLE
	CHECKED		PROFILES
	DATE	4:08:03	SCALE
		DRG NUMBER	IN_S01

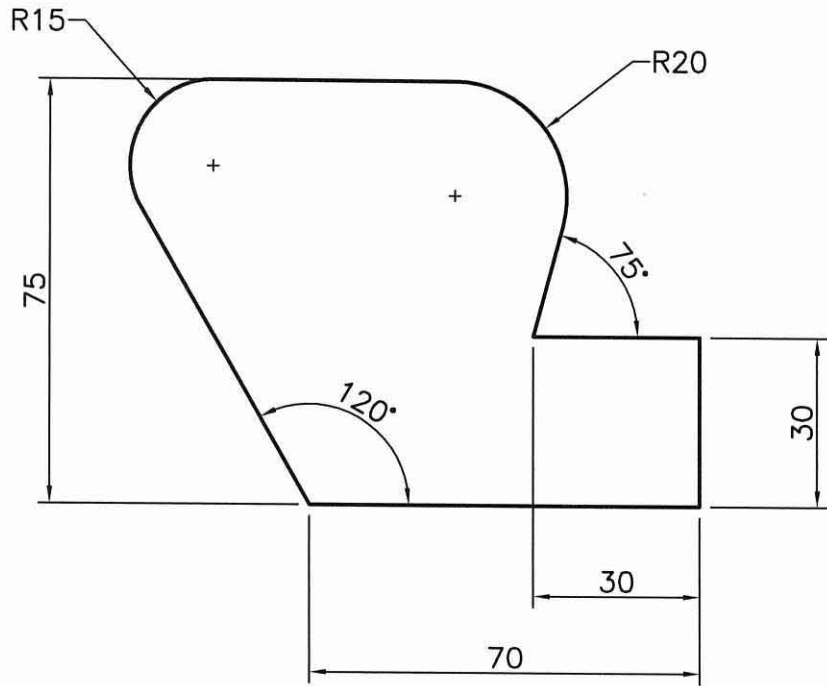


FIGURE 1

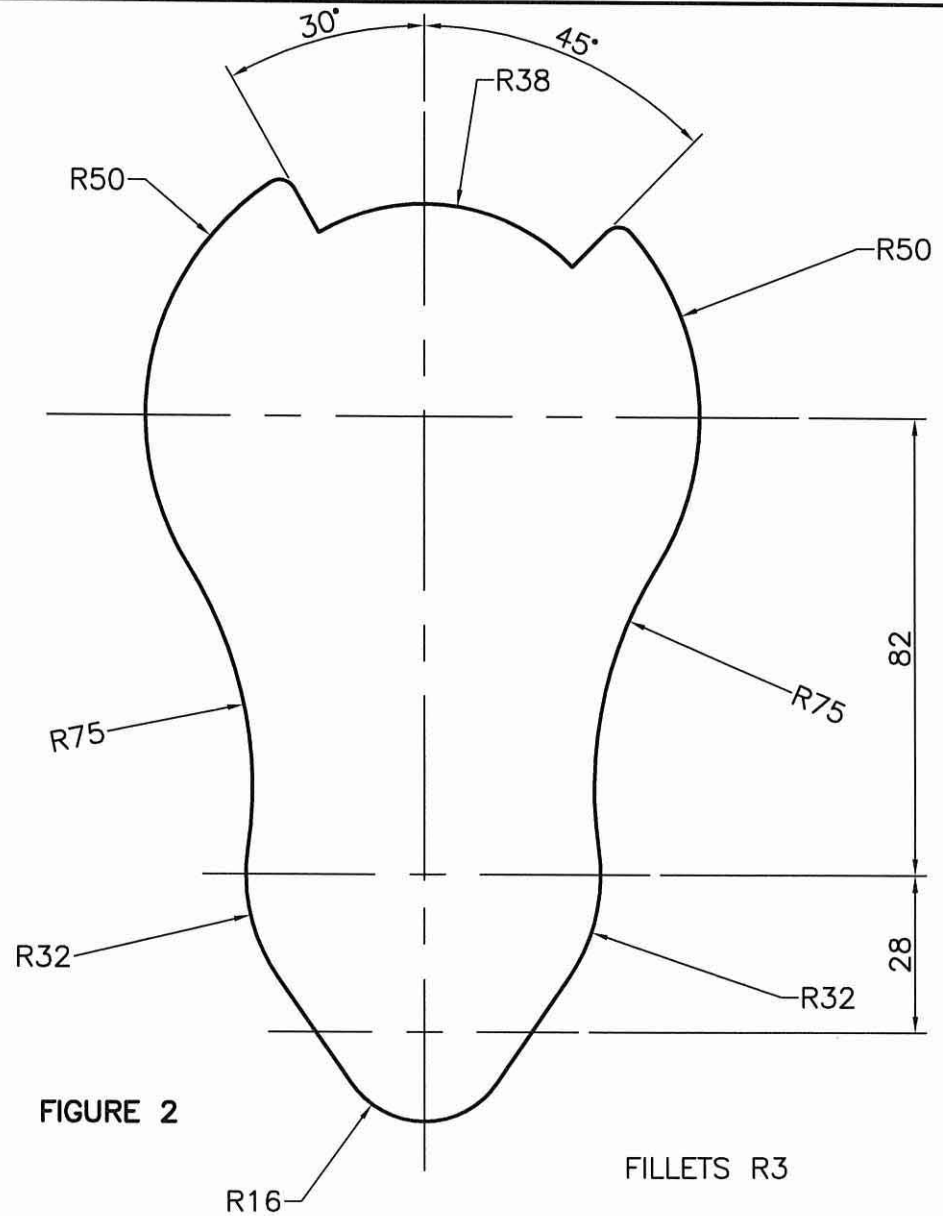
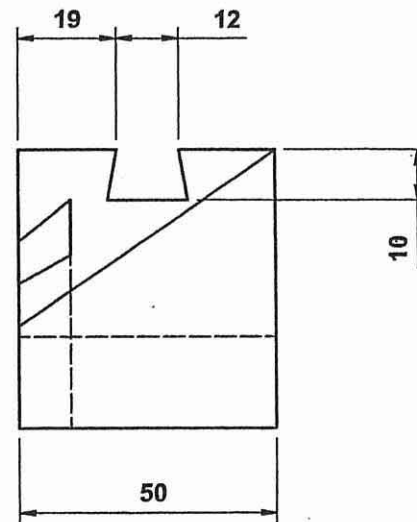
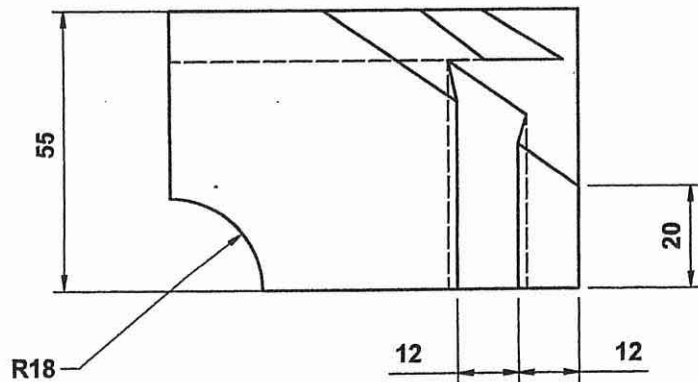
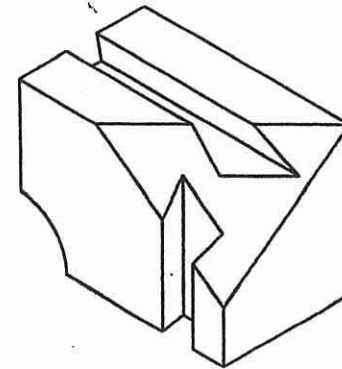
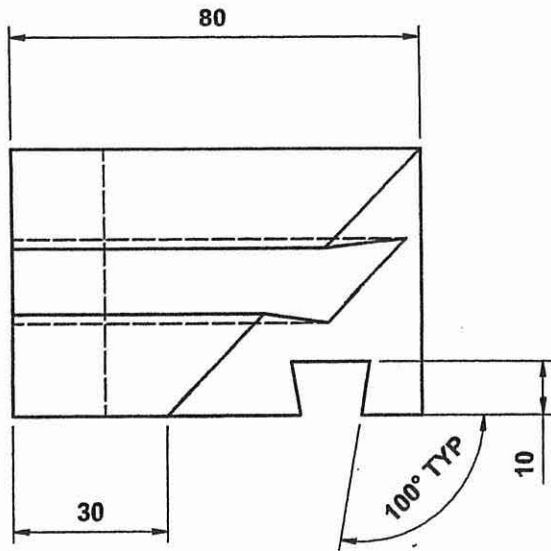


FIGURE 2

FILLETS R3

MOUNT DRUITT COLLEGE OF TAFE  
ENGINEERING DRAFTING

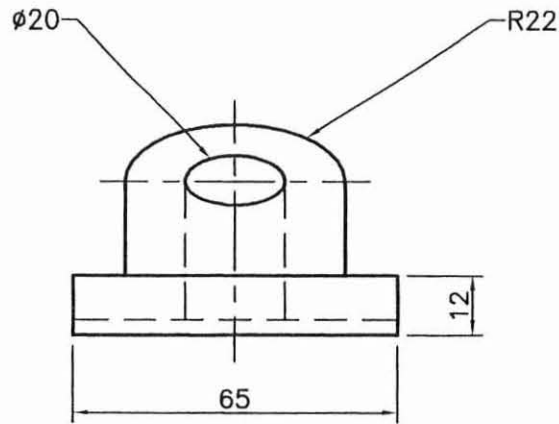
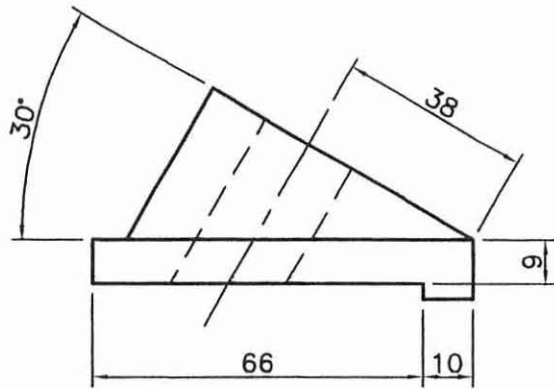
	DRAWN: P.S.	TITLE: PROFILES	
	CHECKED:		
	DATE: 7:02:2005	SCALE: NTS	DRAWING No: INS02



MOUNT DRUITT COLLEGE OF TAFE  
DETAIL DRAFTING

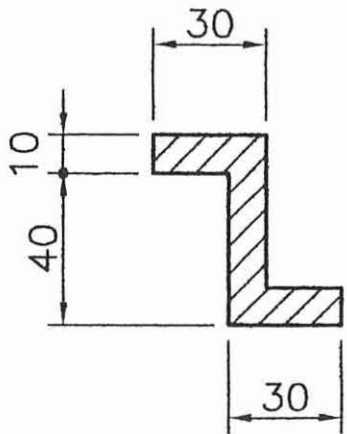
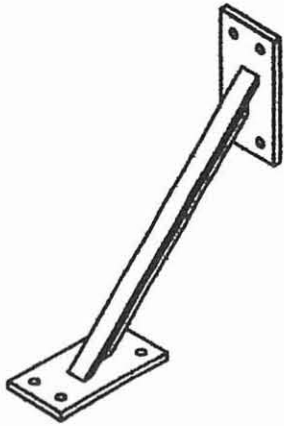
	DRAWN <b>P.S.</b>	TITLE	
	CHECKER	<b>SUPPORT BLOCK</b>	
	DATE <b>12:08:03</b>	SCALE <b>1:1</b>	PRG. NO. <b>IN_AU01</b>



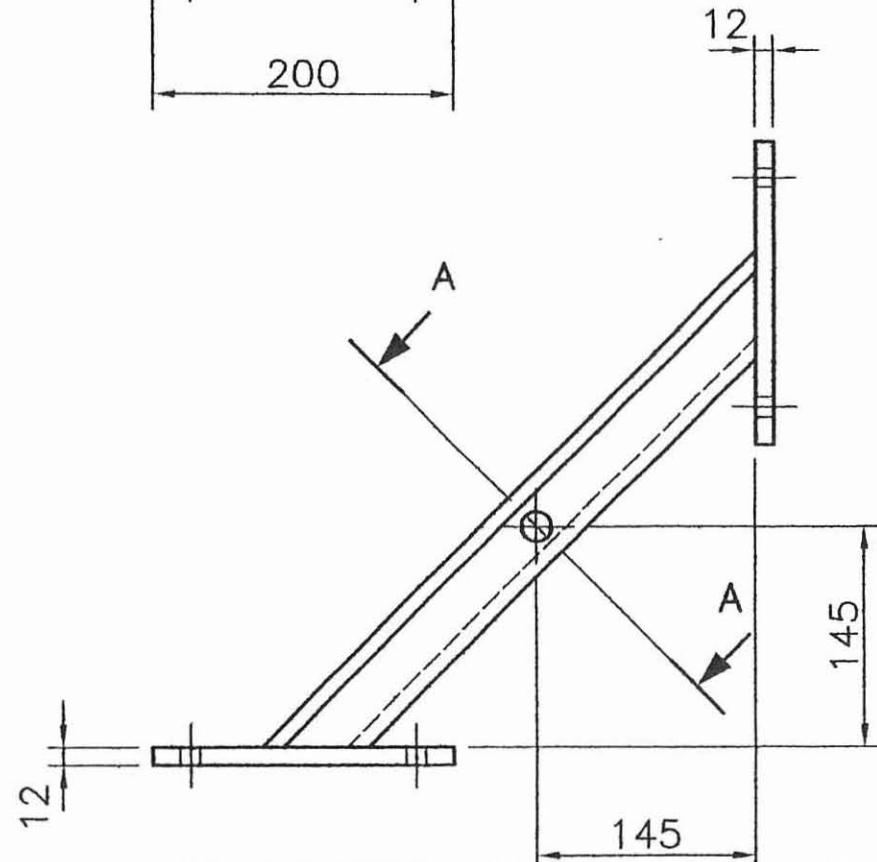
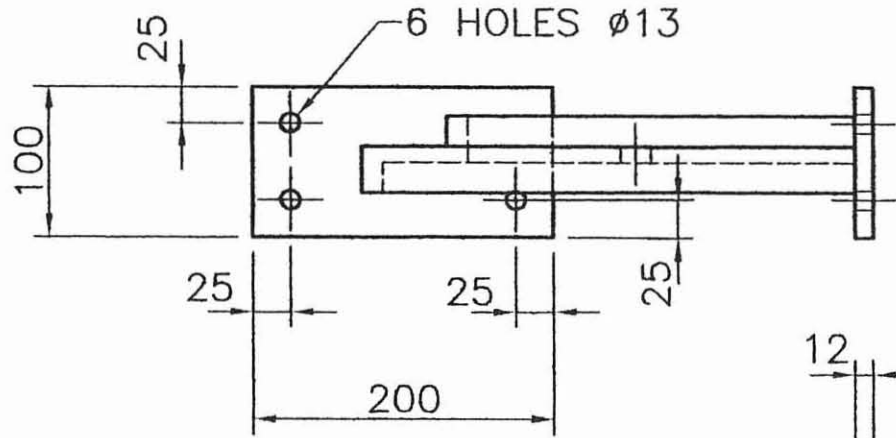
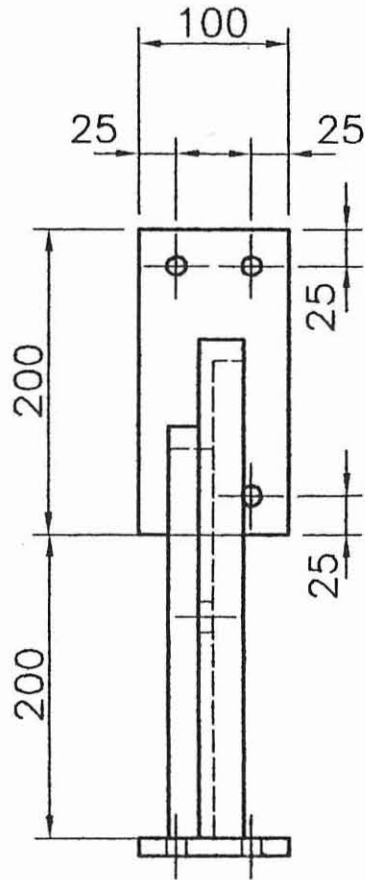


MOUNT DRUITT COLLEGE OF T.A.F.E.  
DETAIL DRAFTING

	DRAWN	P.S.	TITLE	
	CHECKED		WORK PLANES	
	DATE	23:8:01	SCALE	1:1

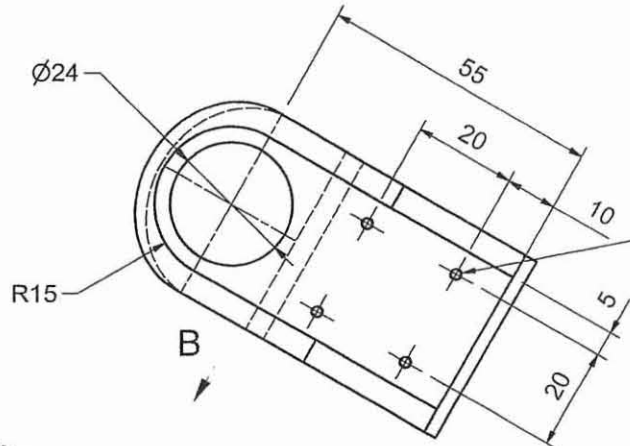
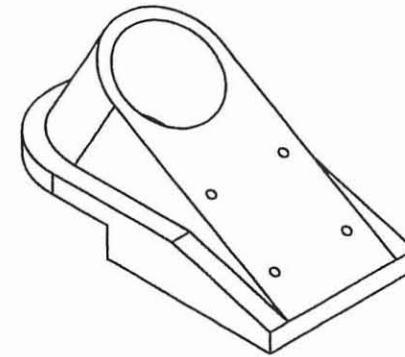
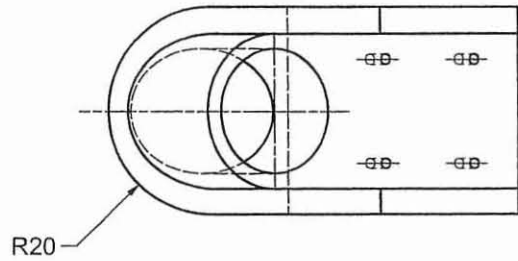


SECTION AA  
SCALE 1:2

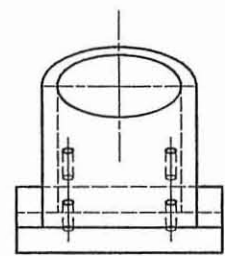
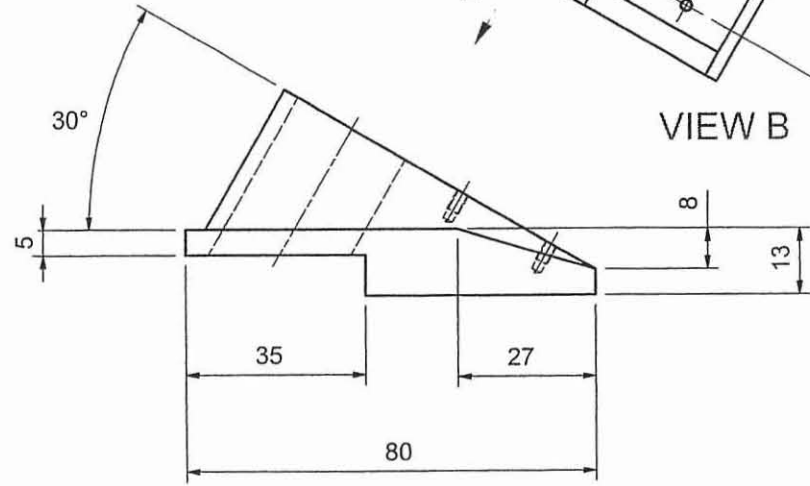


MOUNT DRUITT COLLEGE OF T.A.F.E.  
DETAIL DRAFTING

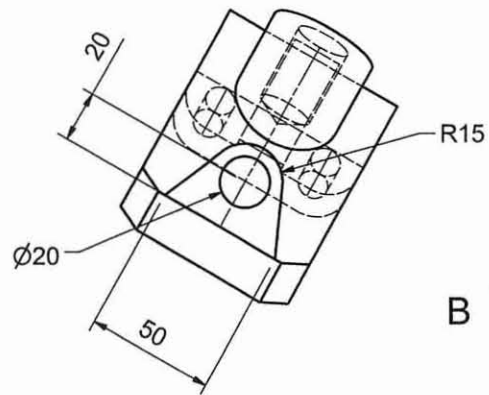
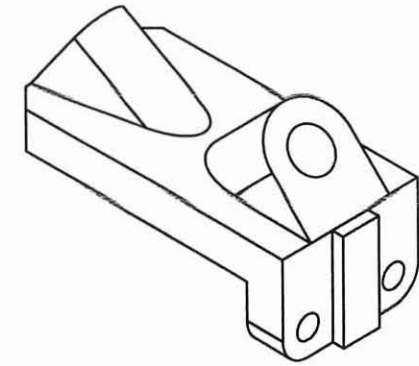
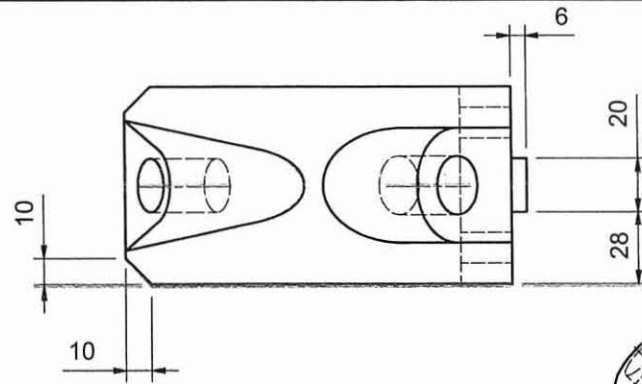
	DRAWN P.S.	TITLE	
	CHECKED	BRACKET	
	DATE 20:08:02	SCALE 1:5,1:2	DRG. NUMBER WP_06



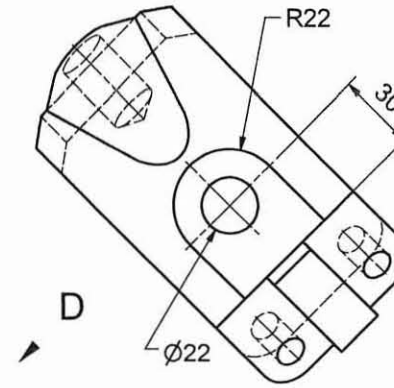
4 HOLES  
M2.5x0.45 - 6H  
x 4DEEP



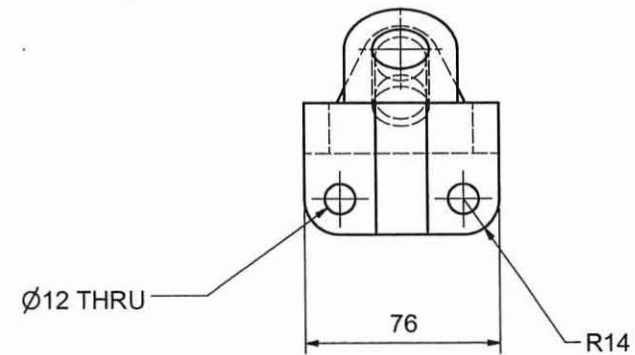
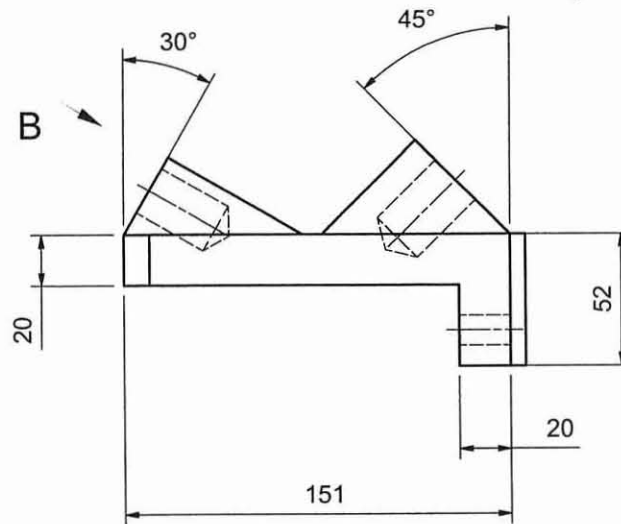
MOUNT DRUITT COLLEGE OF TAFE DETAIL DRAFTING			
	DRAWN P.S.	TITLE <b>ANGLE BLOCK</b>	
	CHECKED		
	DATE 26:08:03	SCALE 1:1	DRG. NO. INV_AU02



VIEW B

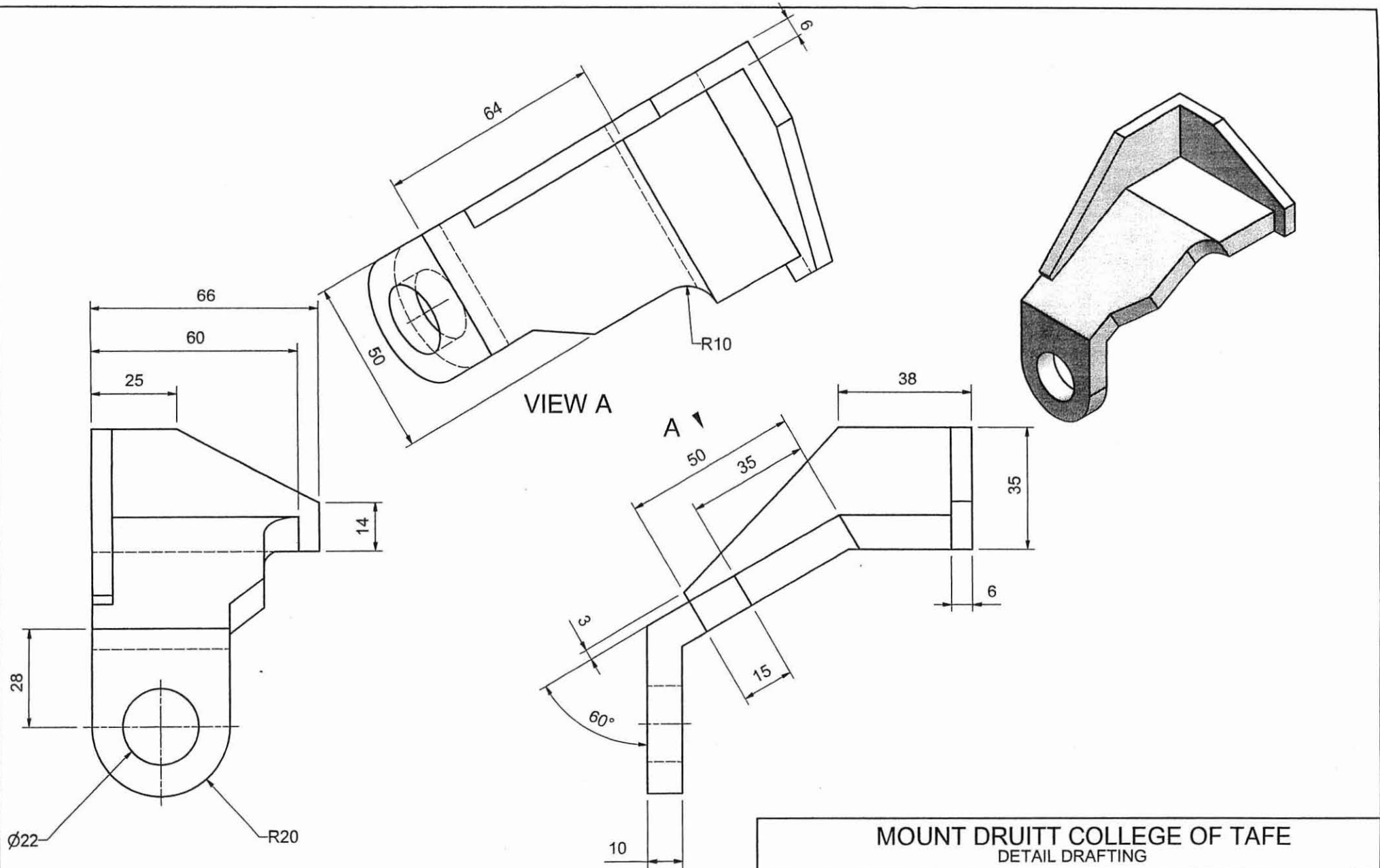


VIEW D



MOUNT DRUITT COLLEGE OF TAFE  
DETAIL DRAFTING

	DRAWN	P.S.	TITLE	
	CHECKED		GUIDE BLOCK	
	DATE	18:08:03	SCALE	1:2
				INV_AU03



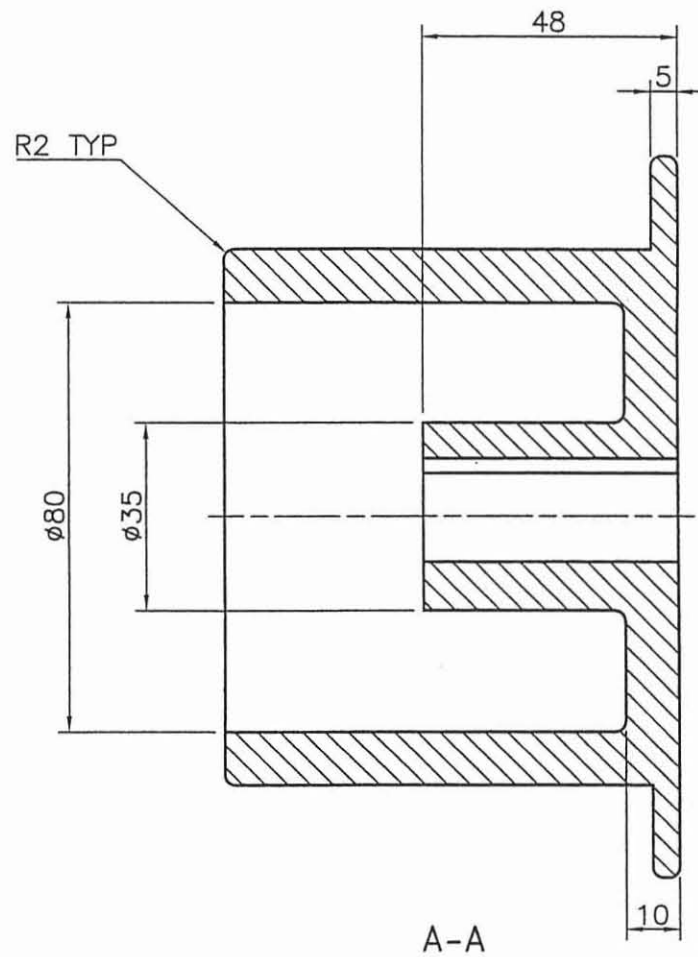
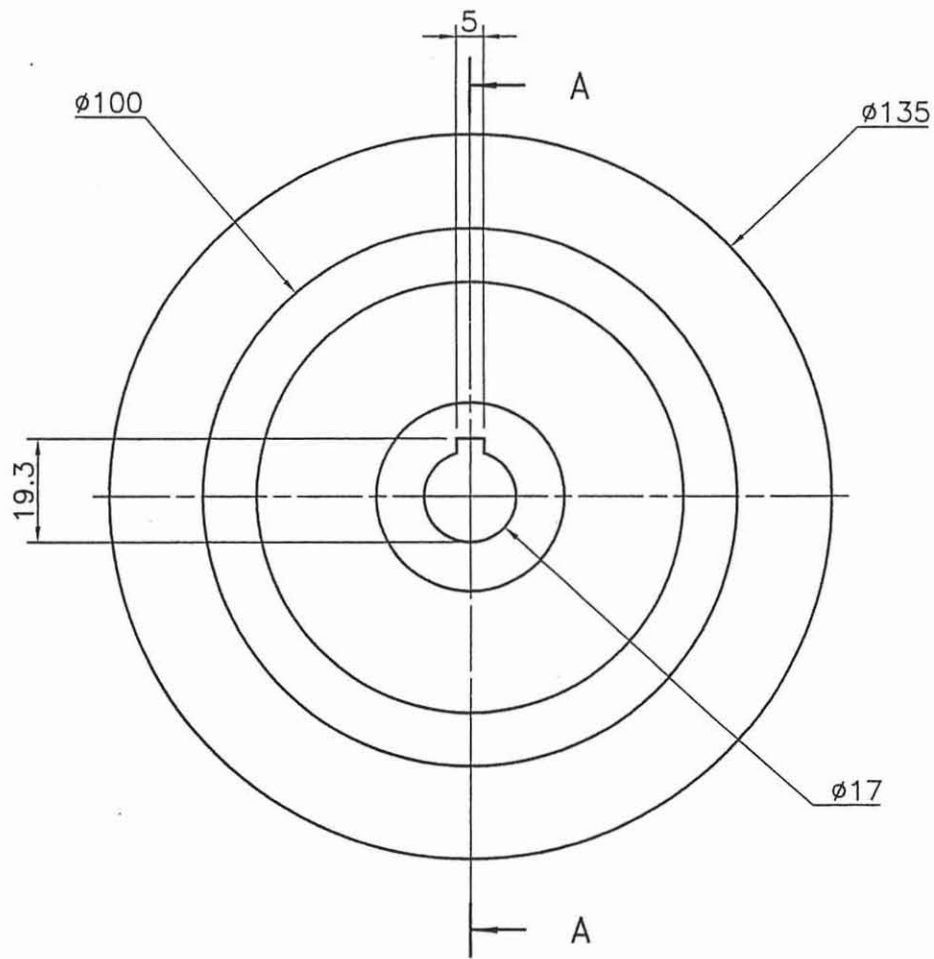
$\phi 22$  R20

VIEW A

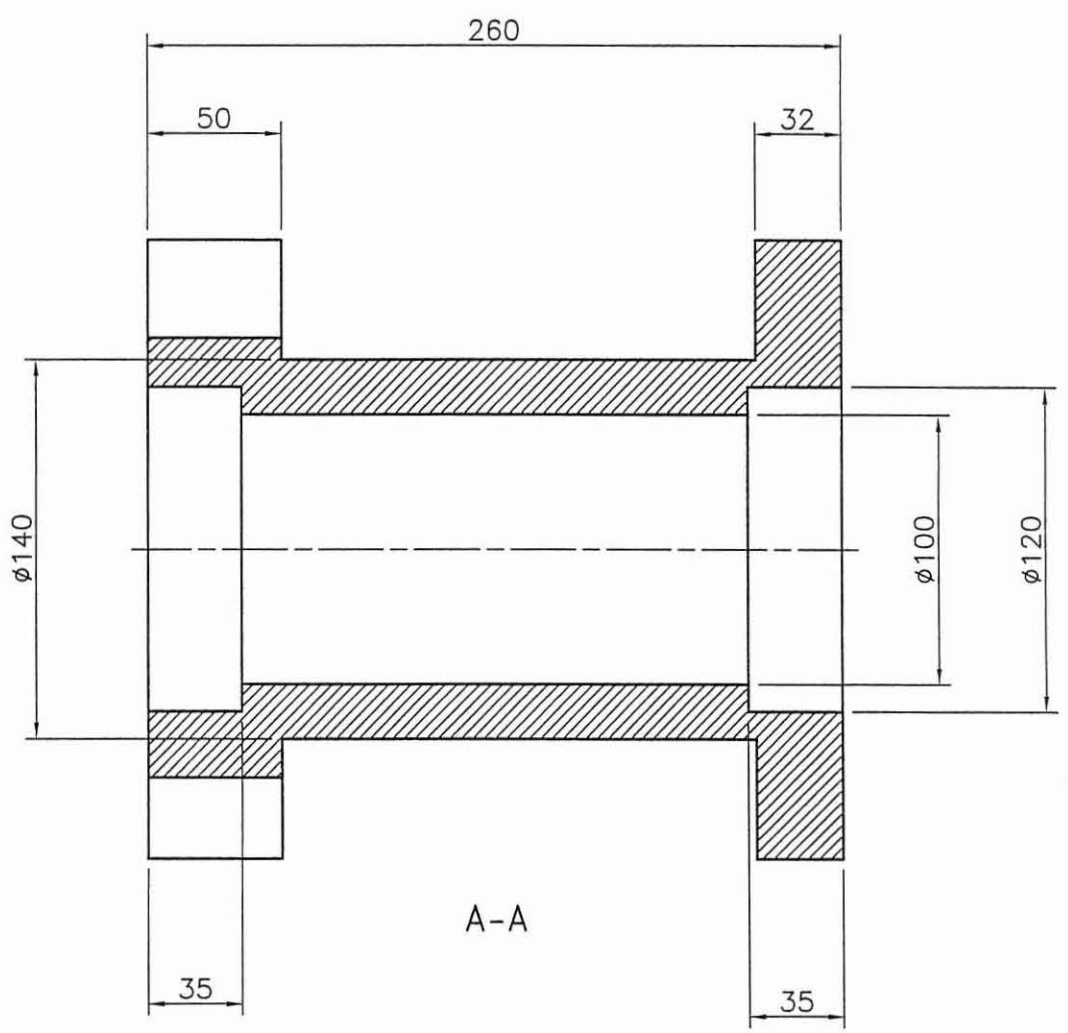
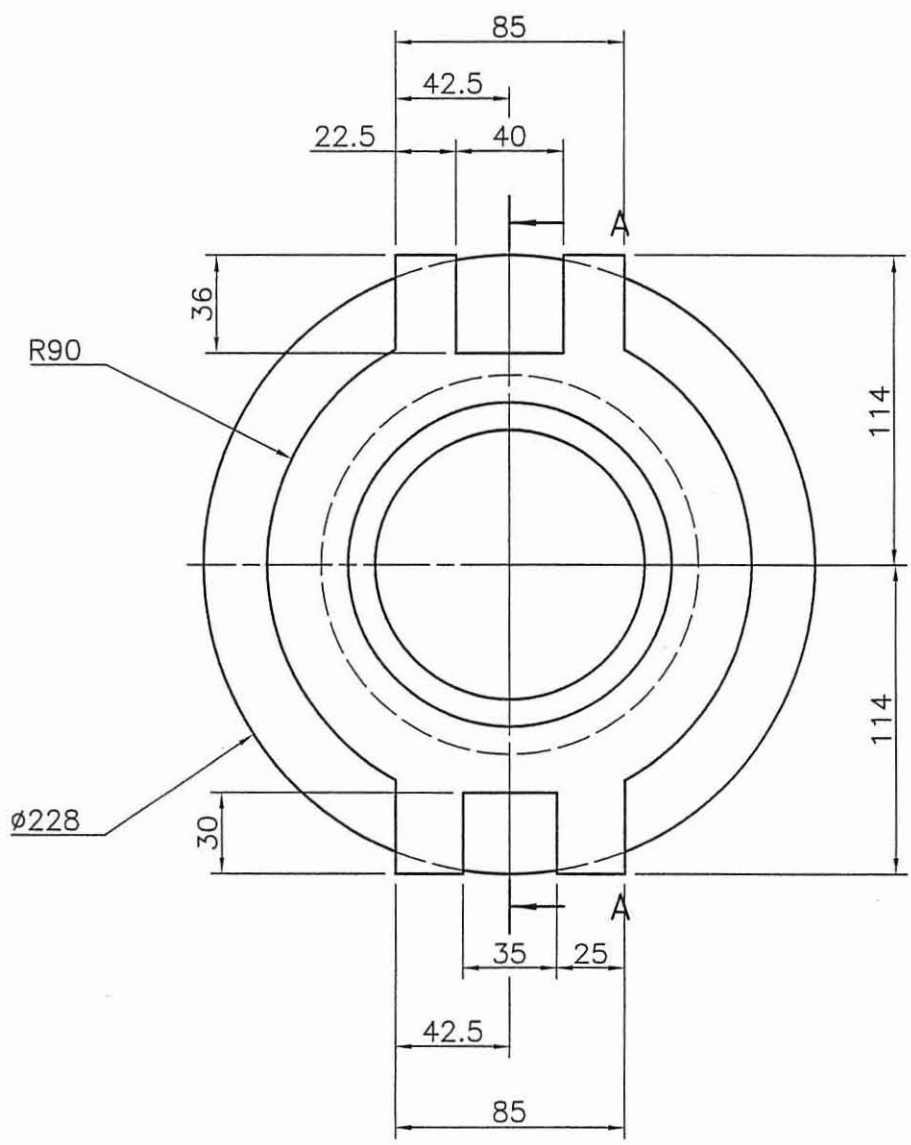
A

MOUNT DRUITT COLLEGE OF TAFE  
DETAIL DRAFTING

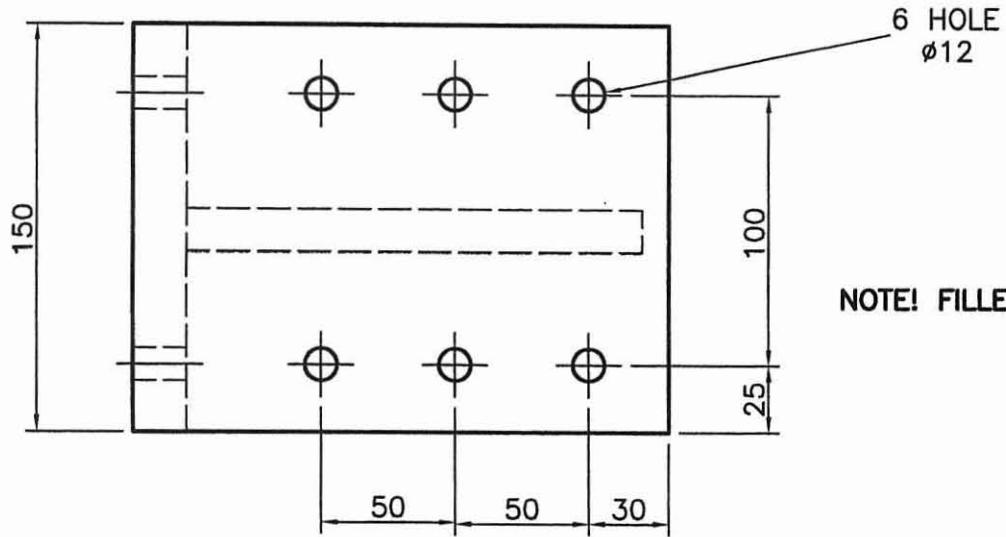
	DRAWN P.S.	TITLE	
	CHECKED	BRACKET	
	DATE 1:03:05	SCALE 1:1	DRAWING No. INV_AU04



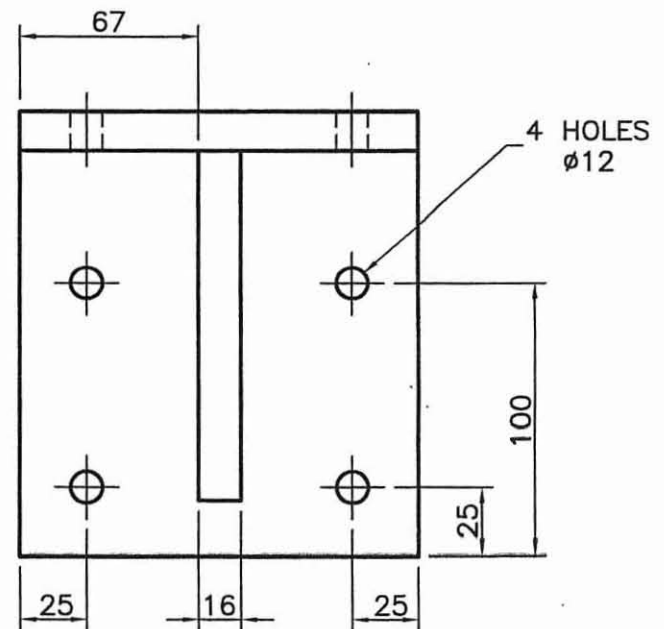
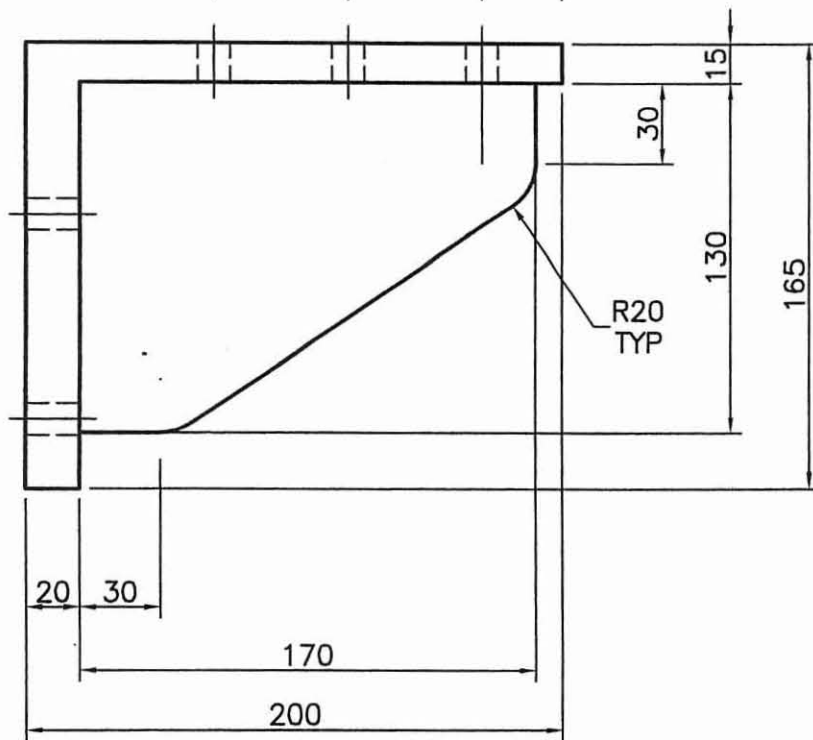
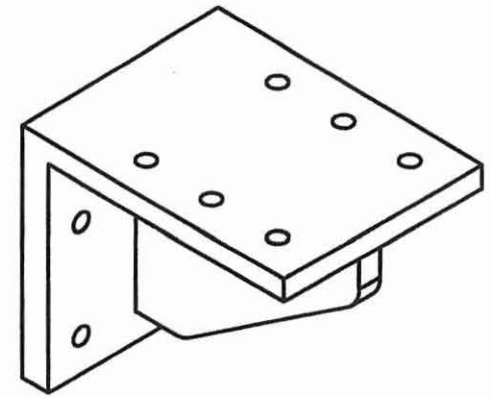
MOUNT DRUITT COLLEGE OF T.A.F.E			
DETAIL DRAFTING			
	DRAWN	P.S.	TITLE
	CHECKED		PULLEY
	DATE	24:02:03	SCALE
		ORG NUMBER	INV_REVO



MOUNT DRUITT COLLEGE OF T.A.F.E			
DETAIL DRAFTING			
	DRAWN	P.S.	TITLE
	CHECKED		VALVE BODY
	DATE	24:02:03	SCALE
			DRG NUMBER
			INV_REV02

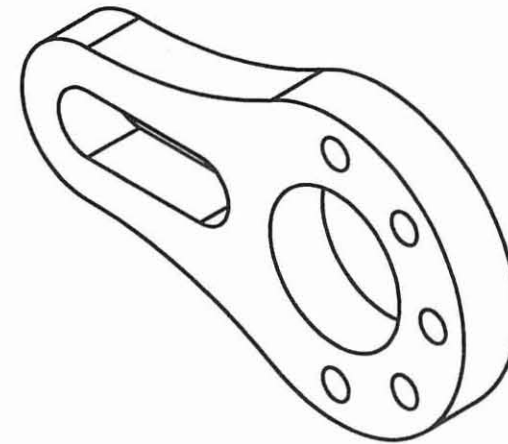
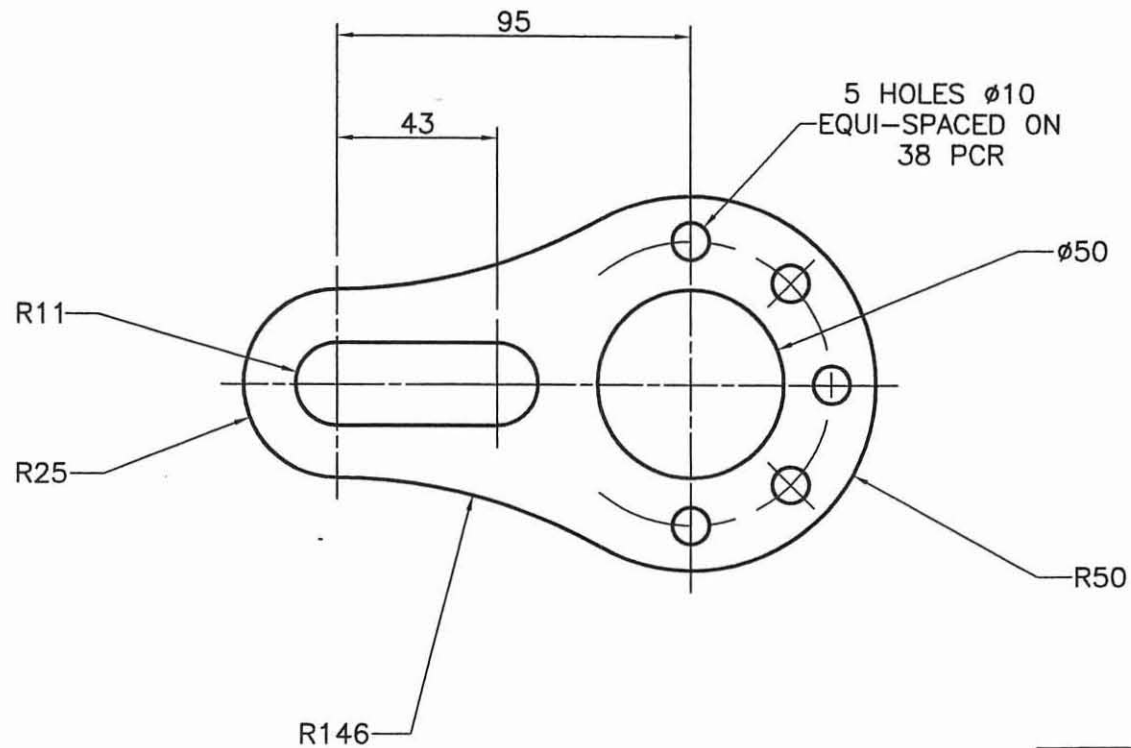
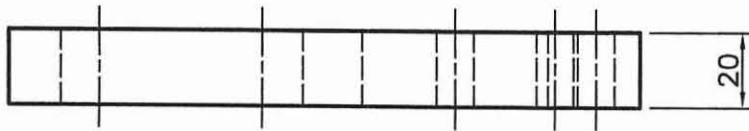


NOTE! FILLET WEB CORNERS 6mm



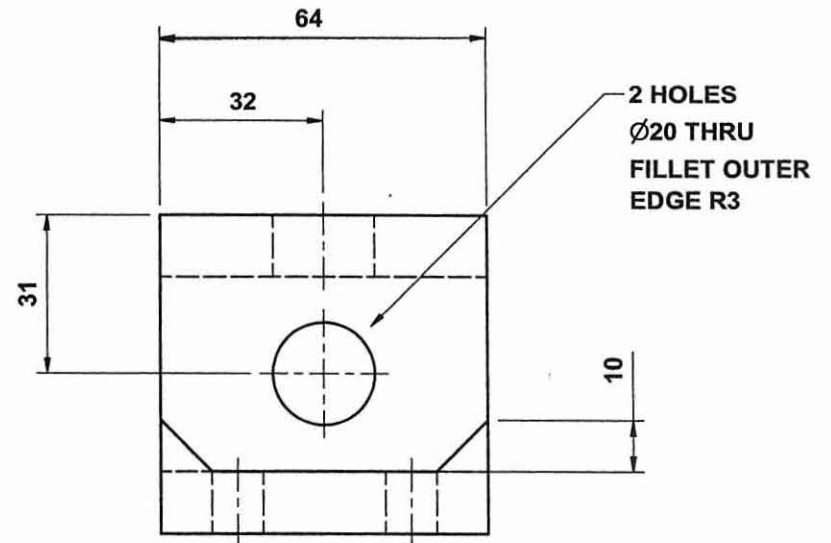
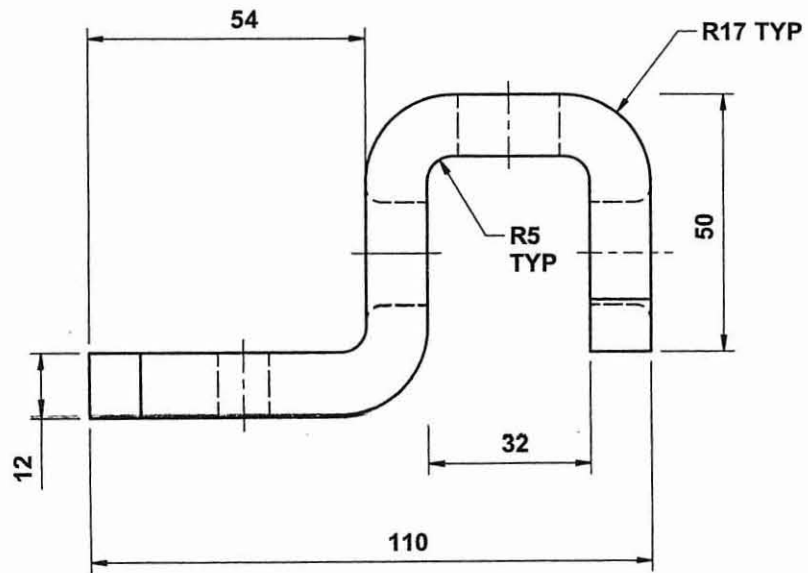
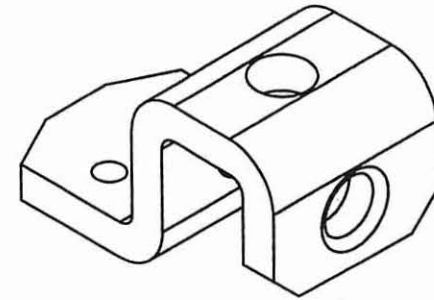
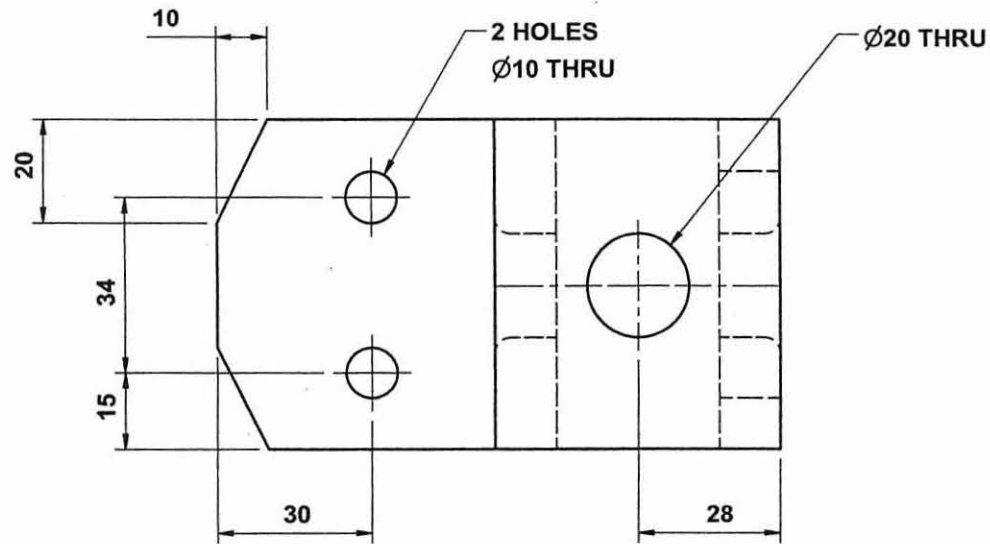
<b>MOUNT DRUITT COLLEGE OF T.A.F.E</b>			
DETAIL DRAFTING			
	DRAWN <b>P.S.</b>	TITLE	
	CHECKED	<b>MOTOR SUPPORT</b>	
	DATE <b>1:9:03</b>	SCALE <b>1:2</b>	DRG NUMBER <b>INV_PA01</b>





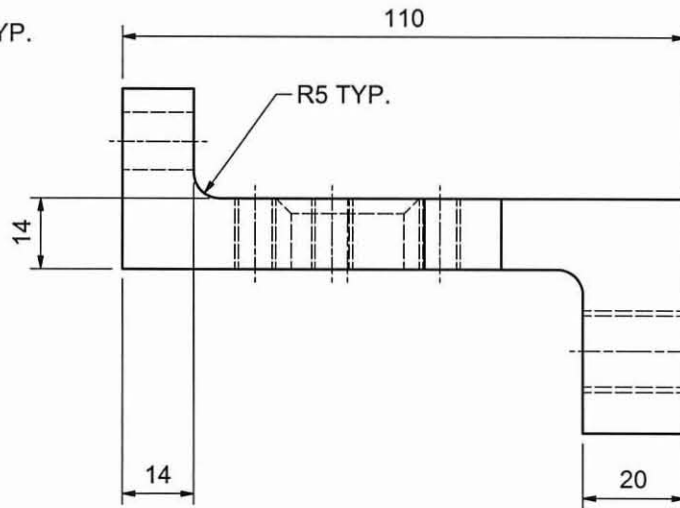
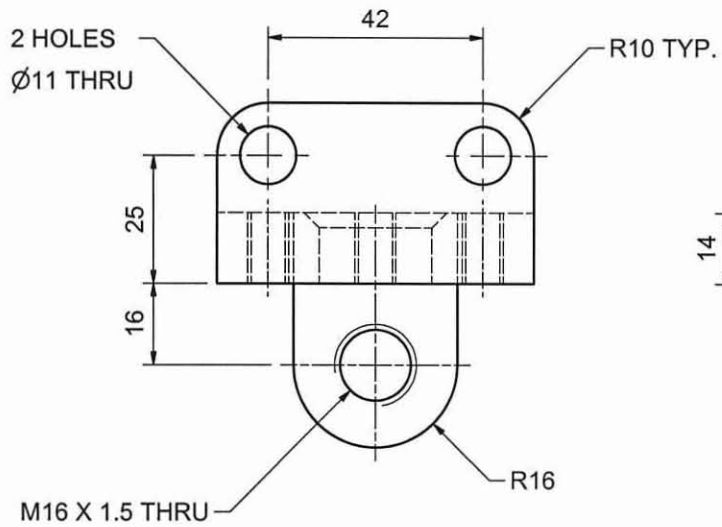
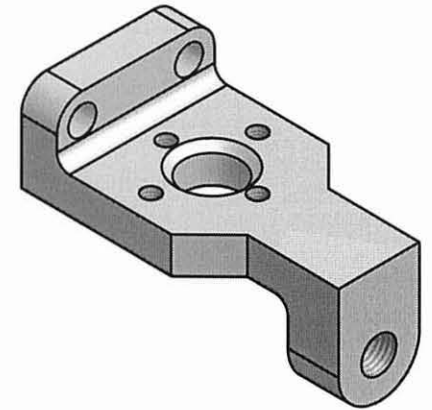
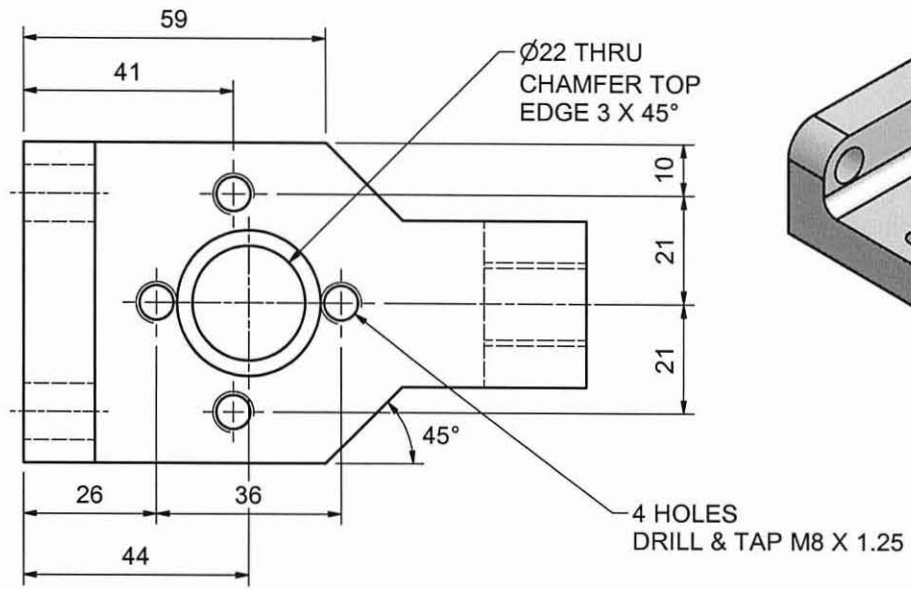
MOUNT DRUITT COLLEGE OF T.A.F.E.  
DETAIL DRAFTING

	DRAWN P.S.	TITLE	
	CHECKED	SLOTTED GUIDE	
	DATE 8:04:02	SCALE 1:2	DRG. NUMBER INV_PA02

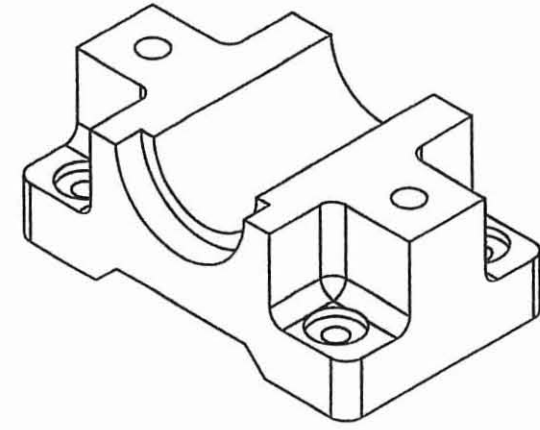
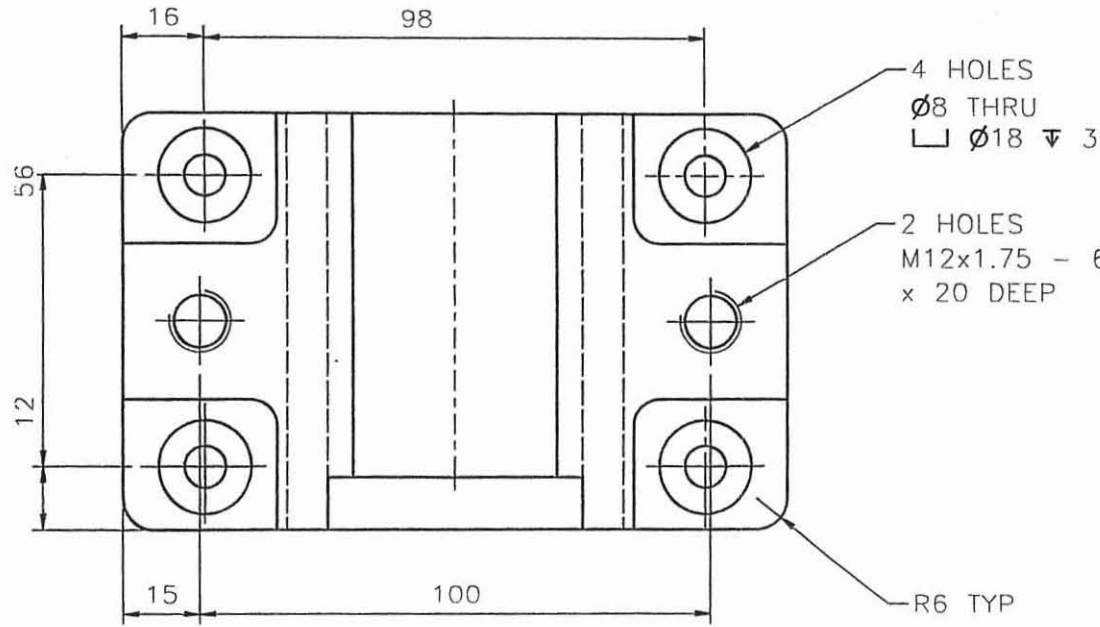


MOUNT DRUITT COLLEGE OF TAFE  
DETAIL DRAFTING

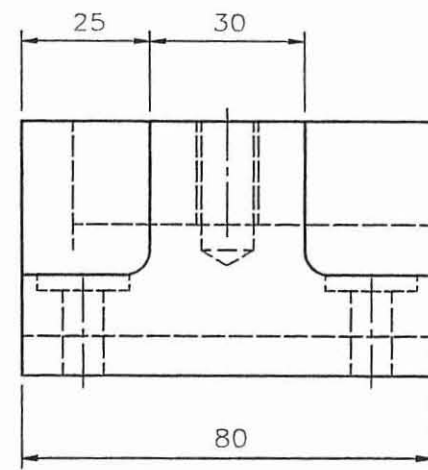
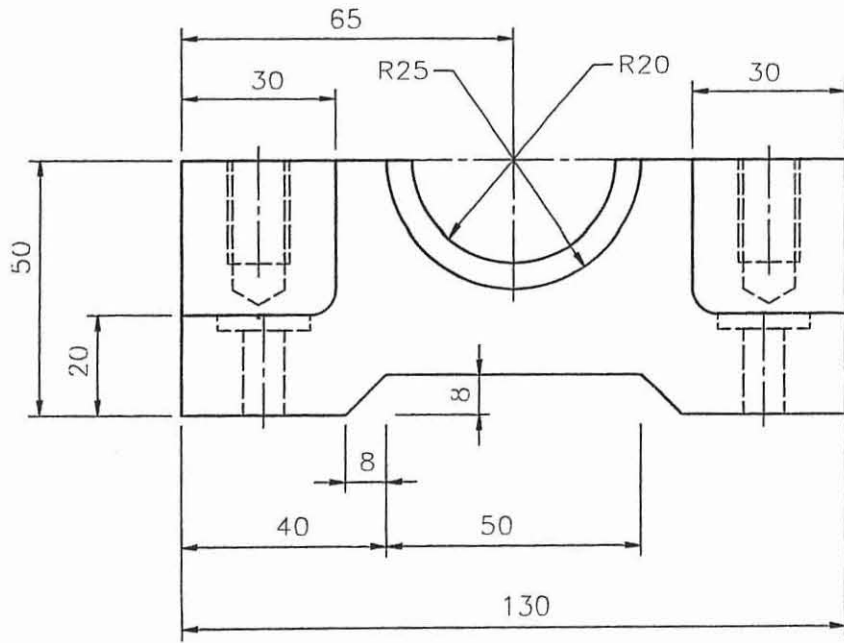
	DRAWN	TITLE	
	<b>P.S.</b>	BRACKET	
	CHECKED	DATE	SCALE
	02:07:03	1:1	DRG. NO. IN_F01



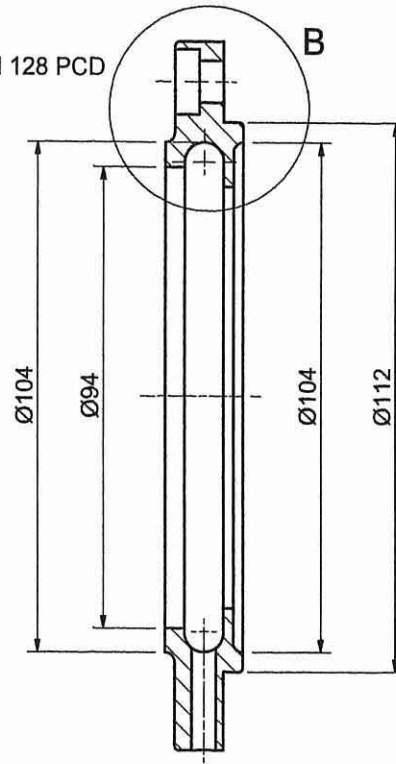
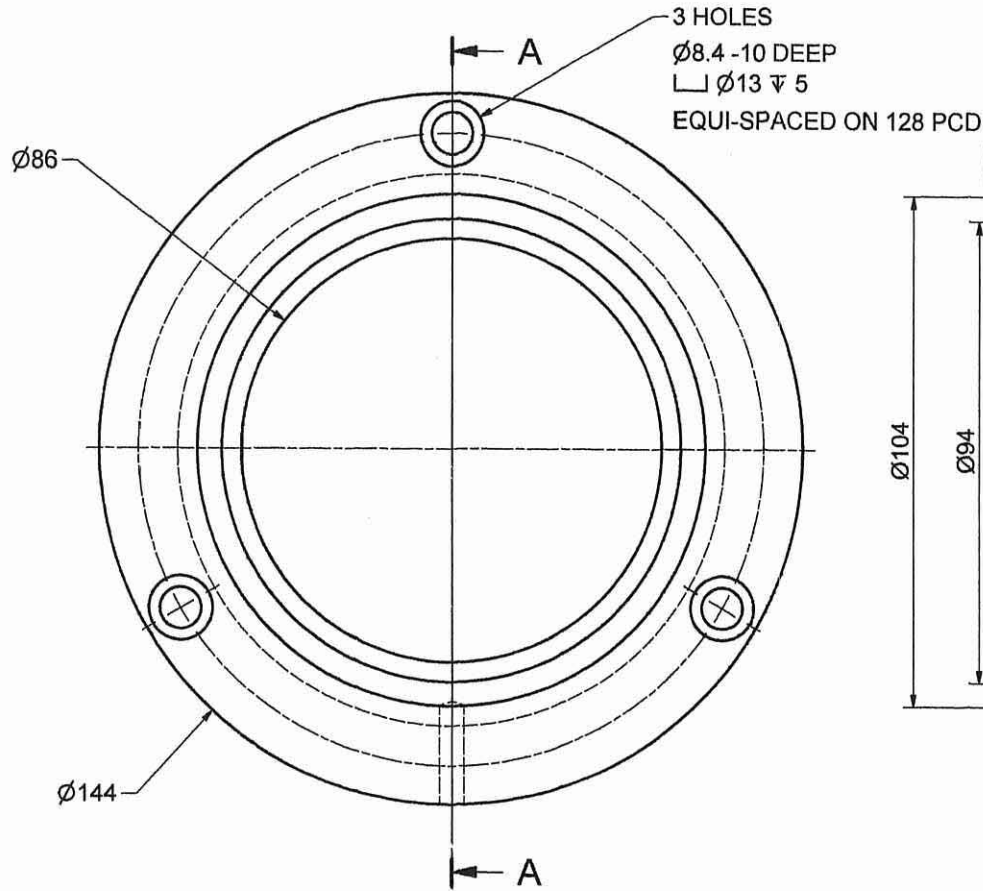
<b>MOUNT DRUITT COLLEGE OF TAFE</b> DETAIL DRAFTING			
	DRAWN P.S.	TITLE <b>MOUNTING BRACKET</b>	
	CHECKED		
	DATE 10:08:2009	SCALE 1:1	DRG. NO. IN_F02



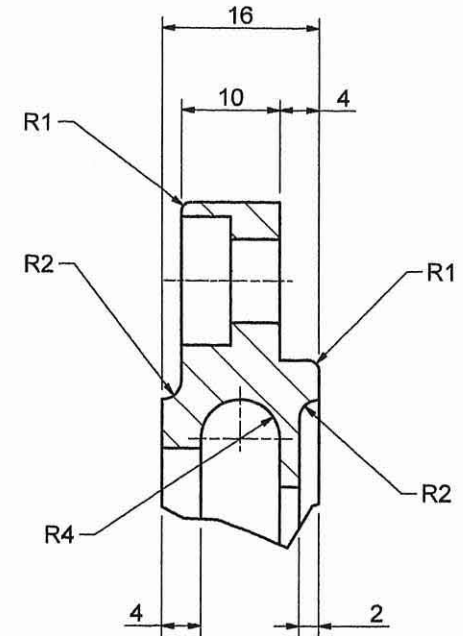
NOTE! ALL FILLETS R5 UNO



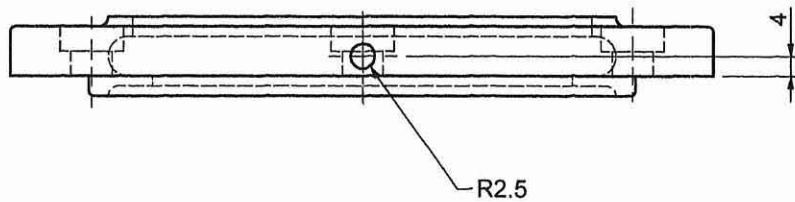
<b>MOUNT DRUITT COLLEGE OF TAFE</b>			
<b>DETAIL DRAFTING</b>			
	DRAWN	P.S.	TITLE
	CHECKED		BEARING BLOCK
	DATE	2:08:03	SCALE
			PP3. NO. IN_F01



SECTION A-A

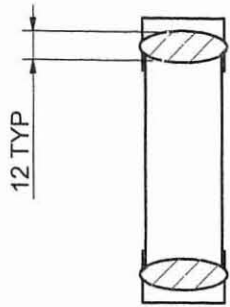


DETAIL B  
 SCALE 2 : 1

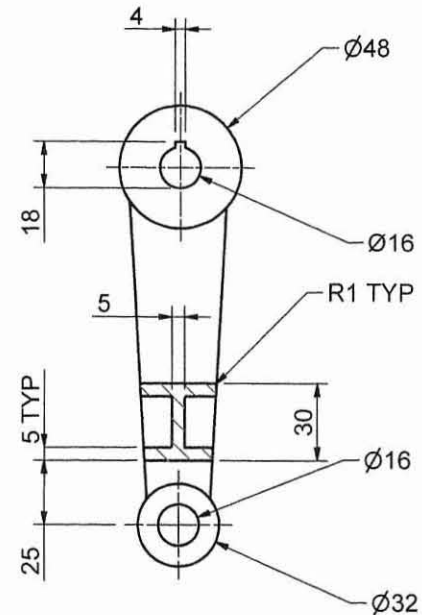
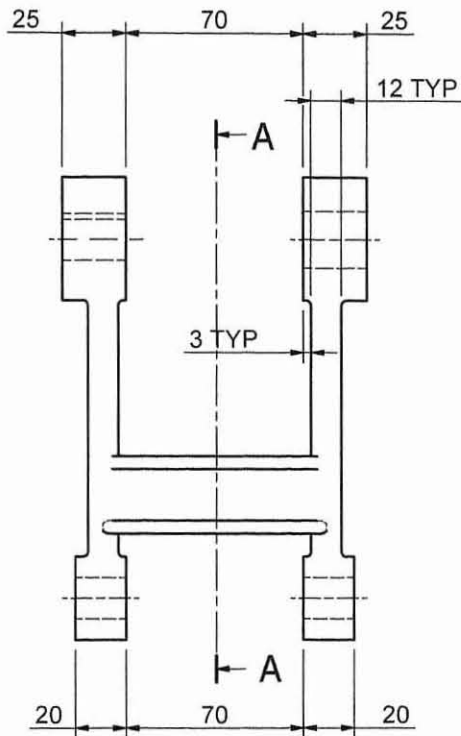
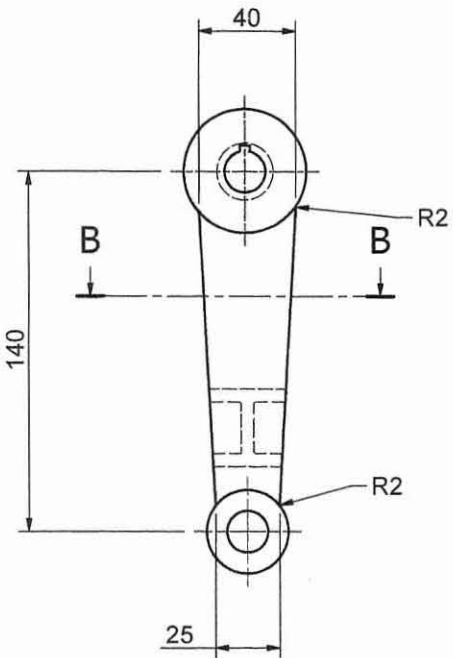
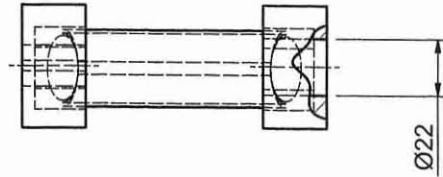


MOUNT DRUITT COLLEGE OF TAFE  
 DETAIL DRAFTING

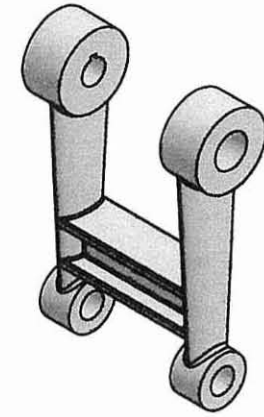
	DRAWN P.S.	TITLE	
	CHECKED	BEARING RETAINER	
	DATE 24:10:2009	SCALE 1:1, 2:1	DRG. NO. DRG-01



SECTION B-B

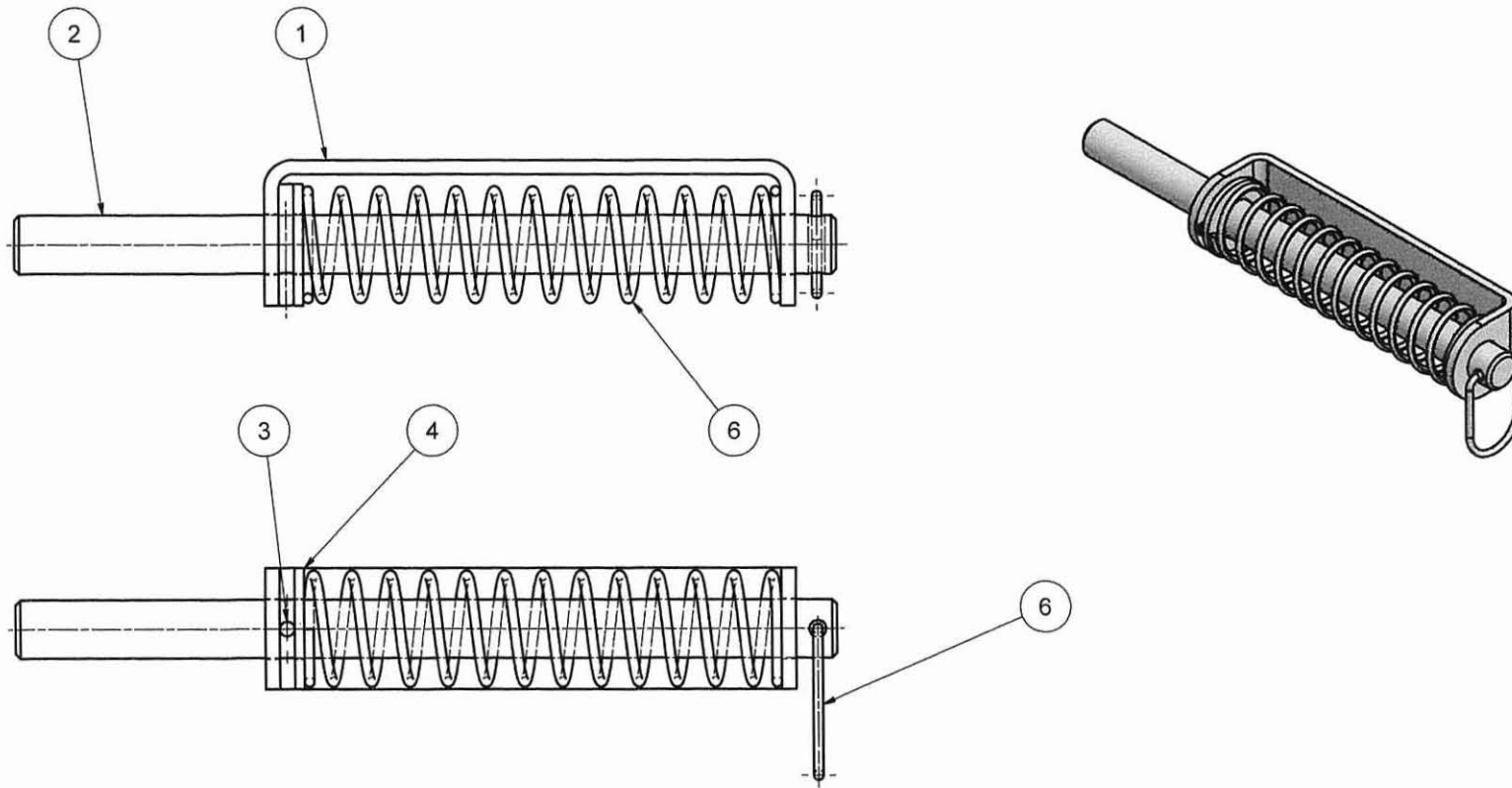


SECTION A-A



NOTE! FILLET RADII TO BE R3 UNO

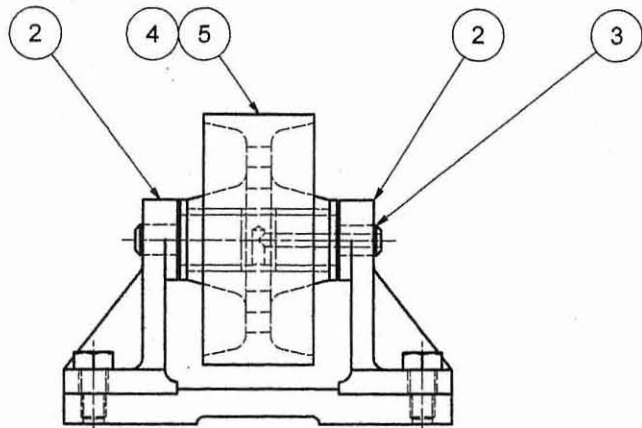
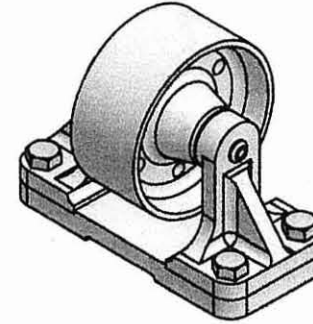
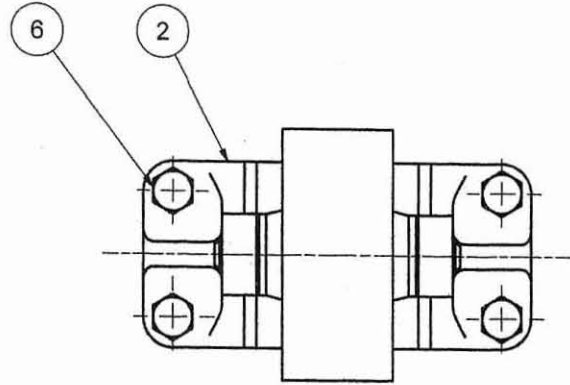
<b>MOUNT DRUITT COLLEGE OF TAFE</b> DETAIL DRAFTING			
	DRAWN	P.S.	TITLE
	CHECKED		<b>FRAME</b>
	DATE	6:08:2009	SCALE
		DRG. NO.	AS_02A



6	LOOP	Alloy Steel	1	AS_01F
5	COMPRESSION SPRING	Alloy Steel	1	AS_01E
4	WASHER	Steel, Mild	1	AS_01D
3	PIN	Alloy Steel	1	AS_01C
2	SHAFT	Steel, Mild	1	AS_01B
1	BRACKET	Steel, Mild	1	AS_01A
ITEM	DESCRIPTION	MATERIAL	QTY	PART NUMBER

**MOUNT DRUITT COLLEGE OF TAFE**  
DETAIL DRAFTING

	DRAWN	P.S.	TITLE
	CHECKED		<b>GATE LATCH ASSEMBLY</b>
	DATE	6:08:2009	SCALE
		DRG. NO.	AS_01

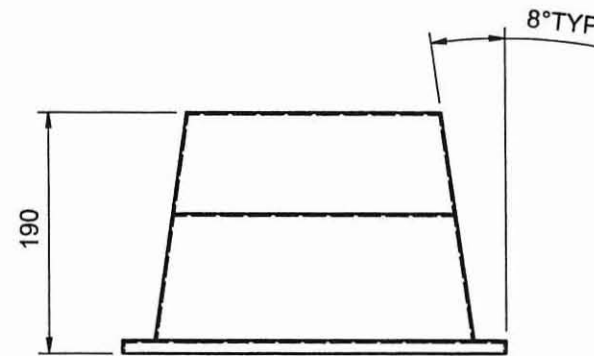
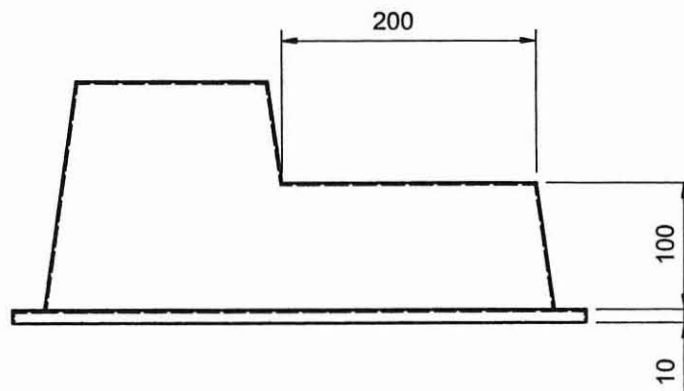
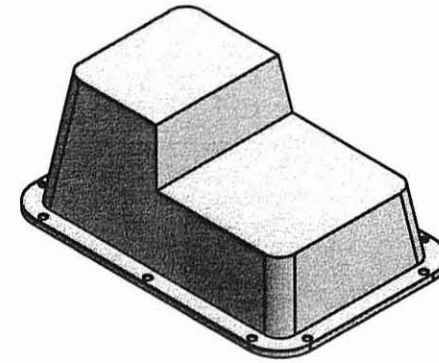
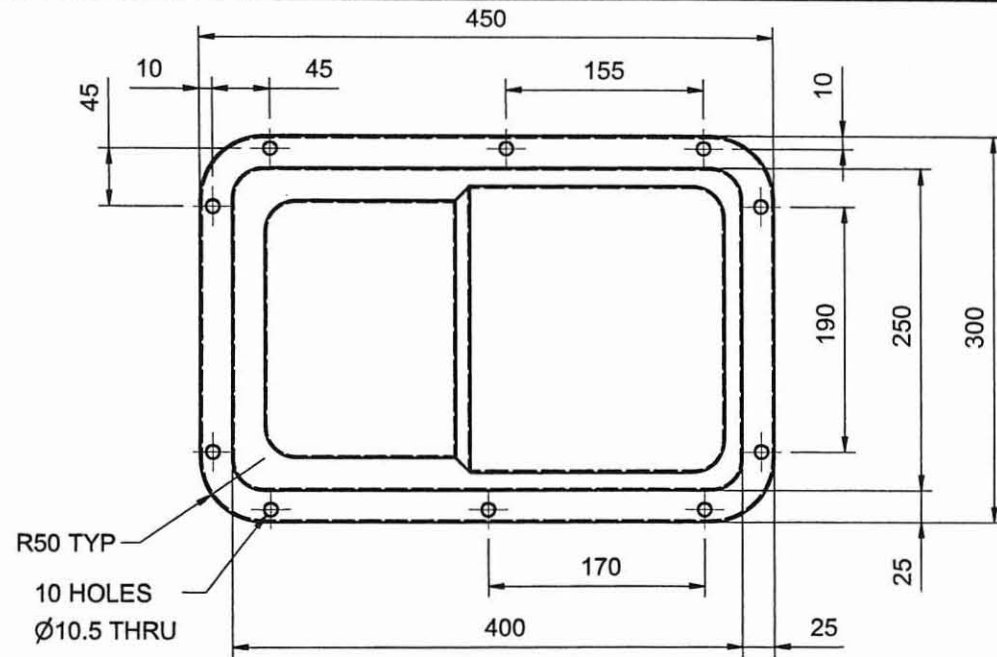


6	Hex Bolt	Steel, Mild	4	ANSI B18.2.3.5M - M10 x 1.5 x 20
5	ROLLER	Cast Steel	1	RA_01-3
4	BUSH	Bronze, Soft Tin	2	RA_01-5
3	SPINDLE	Alloy Steel	1	RA_01-4
2	BRACKET	Cast Iron	2	RA01-2
1	BASE	Cast Iron	1	RA_01-1
ITEM	DESCRIPTION	MATERIAL	QTY	PART NUMBER

MOUNT DRUITT COLLEGE OF TAFE  
DETAIL DRAFTING

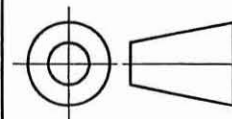
	DRAWN	P.S.	TITLE	
	CHECKED		ROLLER ASSEMBLY	
	DATE	25:09:2009	SCALE	1:2



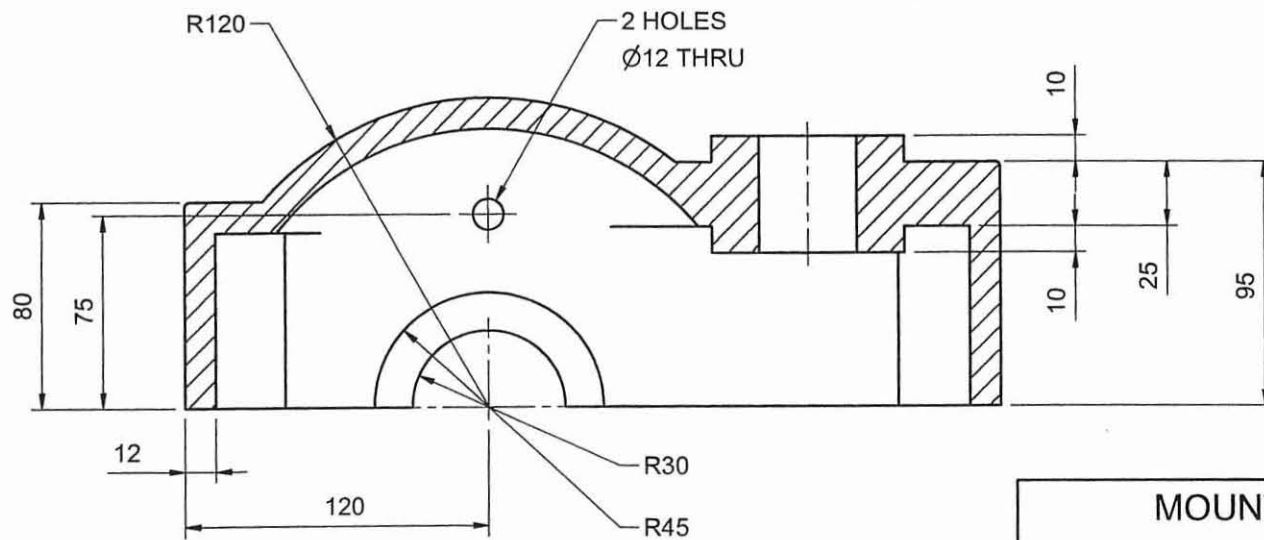
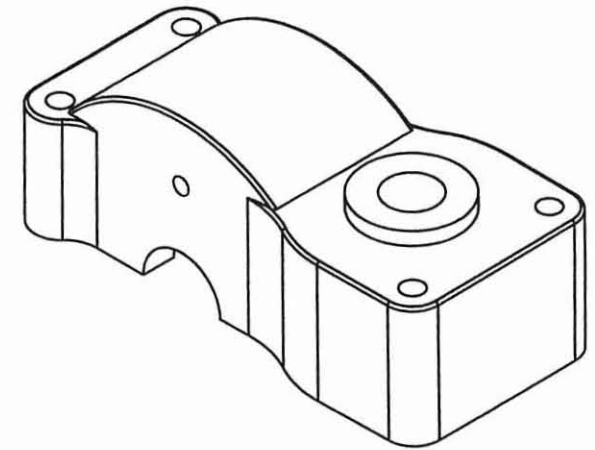
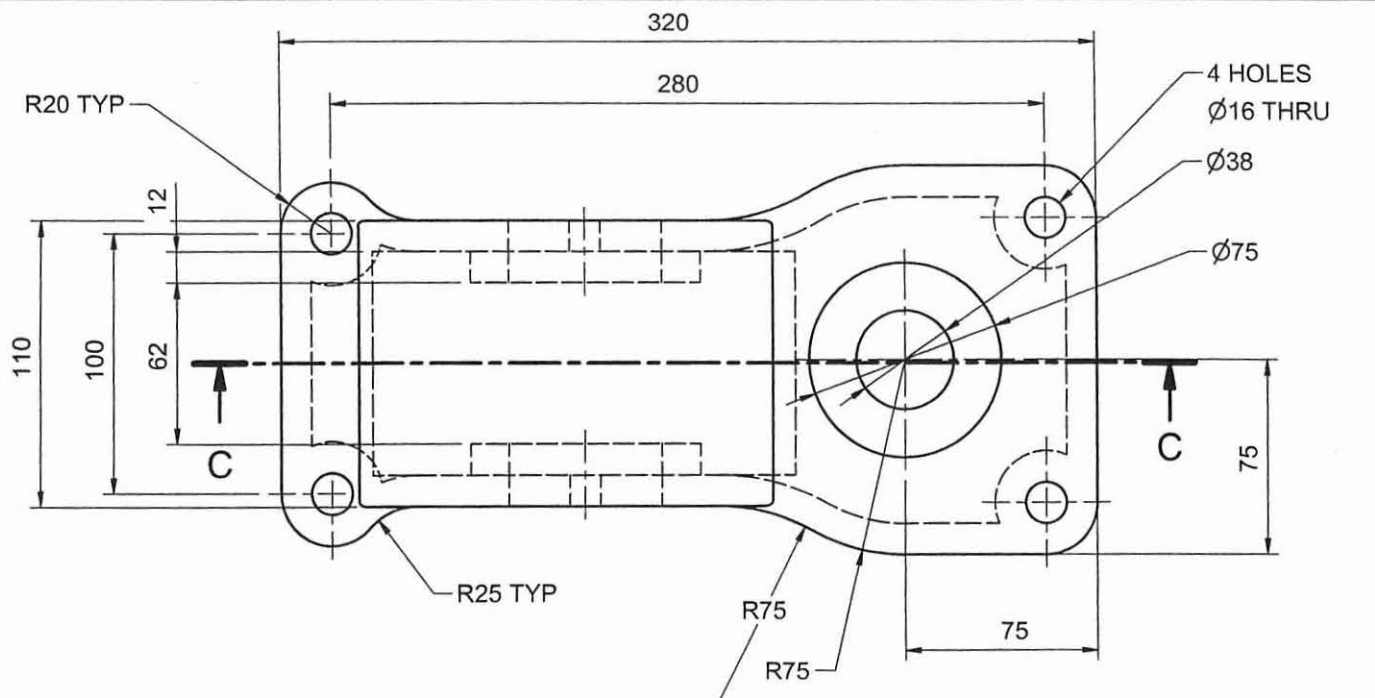


MATERIAL : 1.6mm MILD STEEL  
 APPLY A FILLET OF 25 TO FOUR CORNERS  
 APPLY A FILLET OF 6 TO ALL OTHER CORNERS  
 EXCEPT THE OUTSIDE EDGE WHICH WILL BE 2mm

MOUNT DRUITT COLLEGE OF TAFE  
 DETAIL DRAFTING



DRAWN	P.S.	TITLE	
CHECKED		ENGINE SUMP	
DATE	18:08:03	SCALE	1:2.5
		FIG. NO.	INV_SH01



WALL THICKNESS 12 UNO

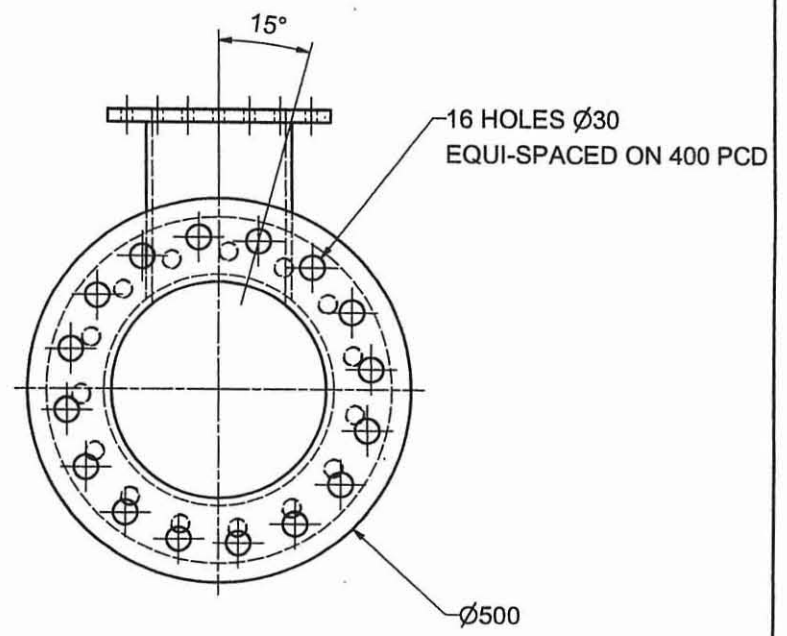
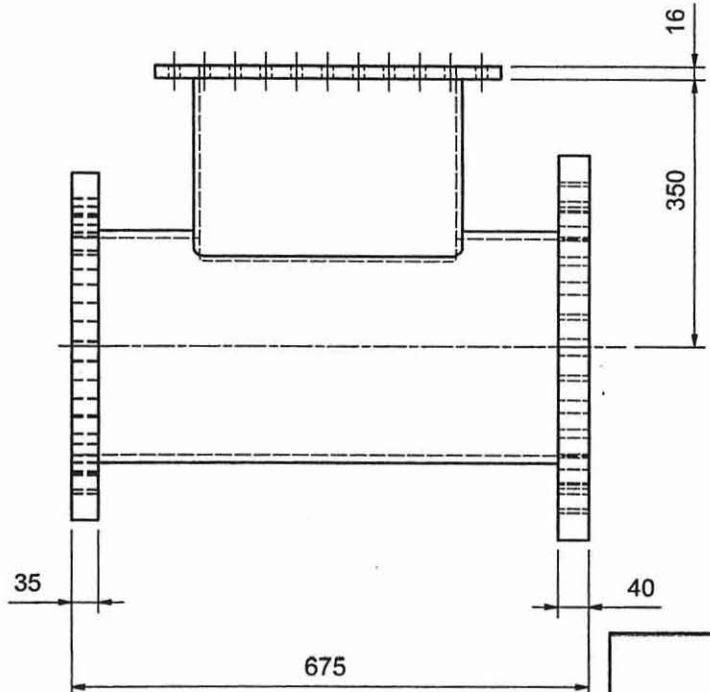
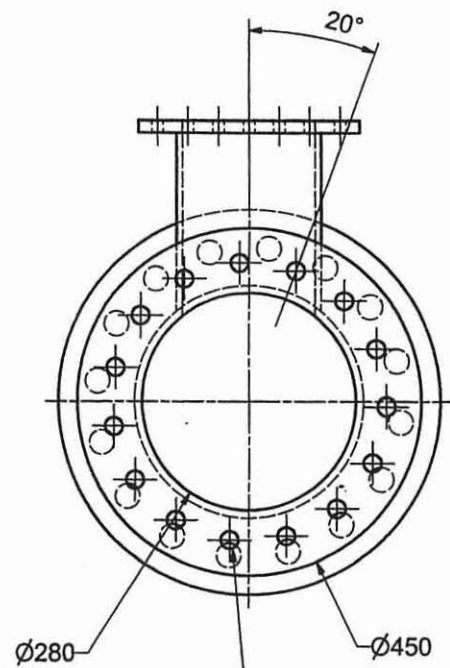
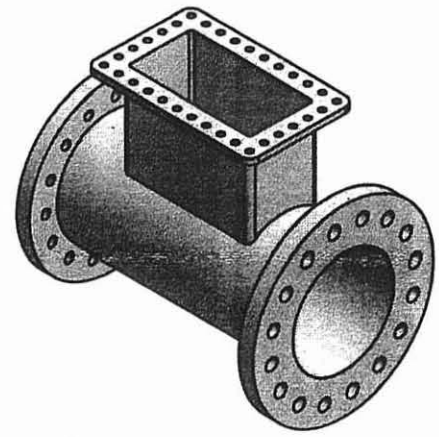
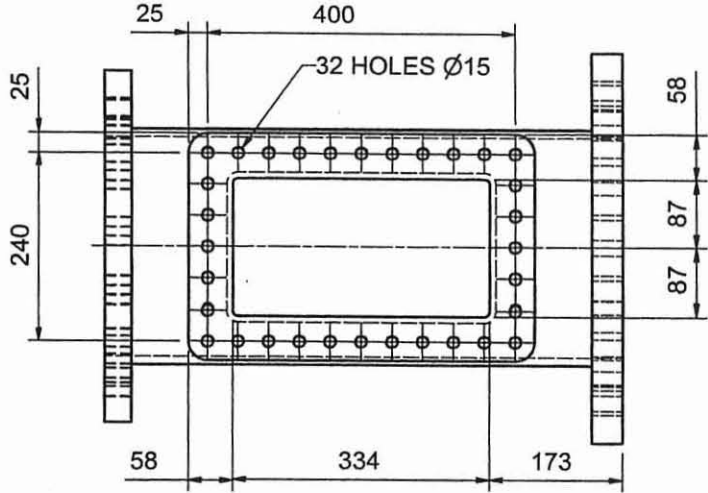
RADIUS ALL CORNERS R3 WHERE POSSIBLE

VIEW C-C

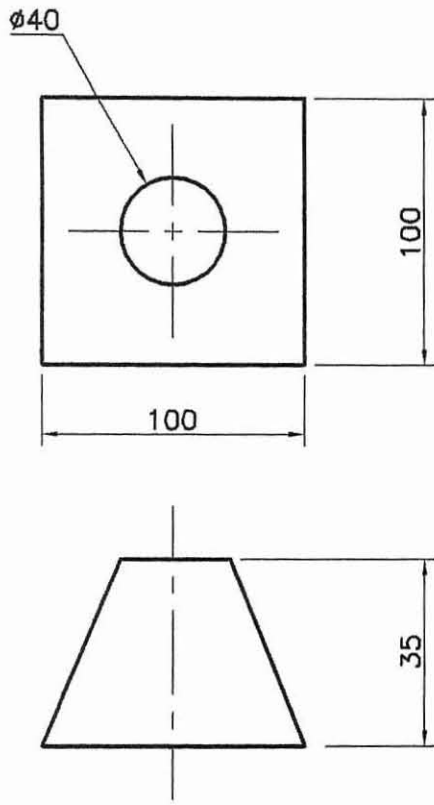
MOUNT DRUITT COLLEGE OF TAFE  
DETAIL DRAFTING

	DRAWN	P.S.	TITLE	
	CHECKED		COVER	
	DATE	18:08:03	SCALE	1:2

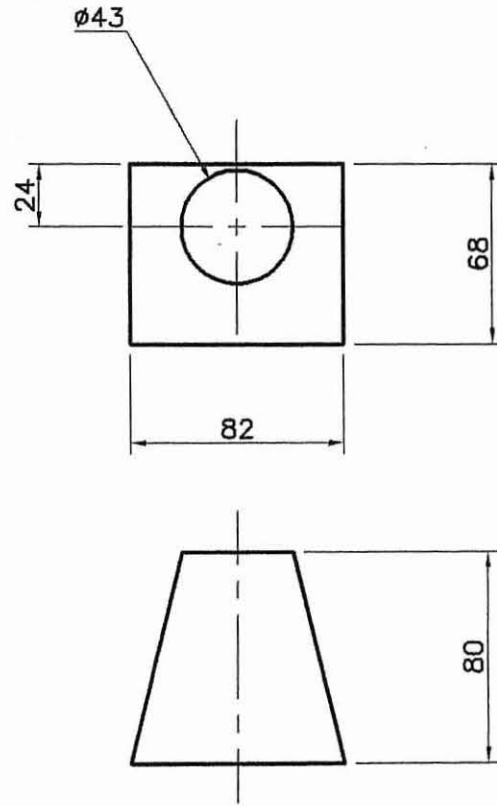
NOTE! ANY DIMENSIONS NOT SHOWN ARE AT THE DISCRETION OF THE STUDENT



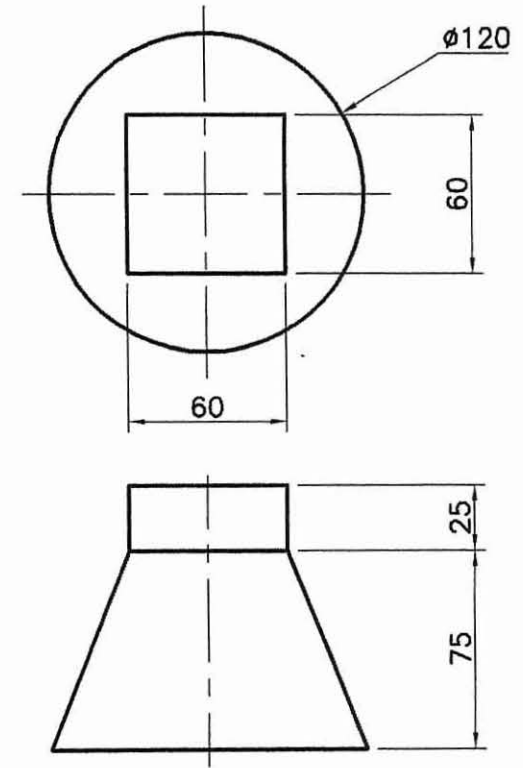
MOUNT DRUITT COLLEGE OF TAFE DETAIL DRAFTING			
	DRAWN P.S.	TITLE <b>TEE JUNCTION</b>	
	CHECKED		
DATE 26:08:03	SCALE NTS	DRAWING No. INV_SH03	



INVL\_01

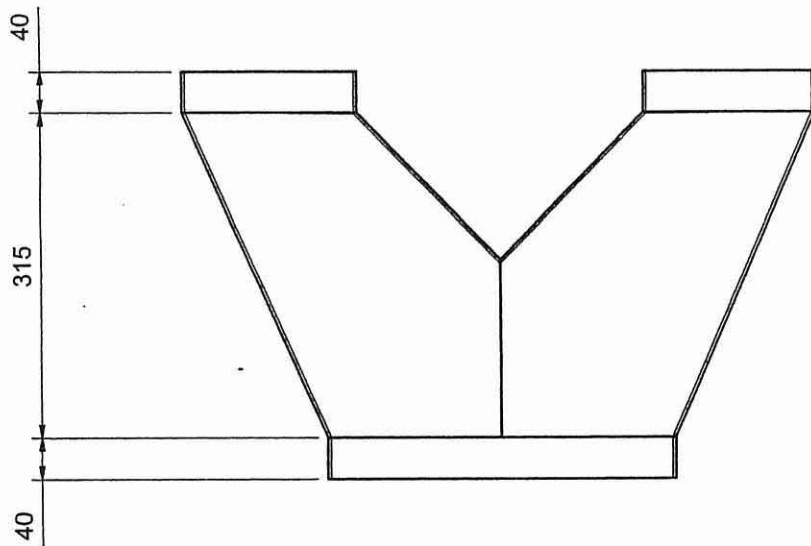
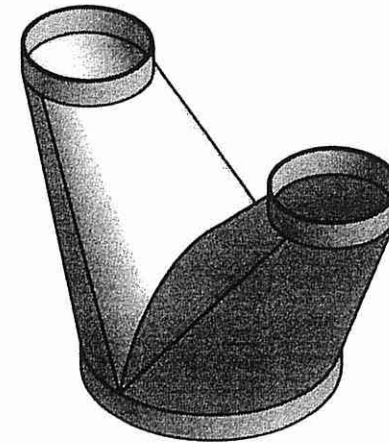
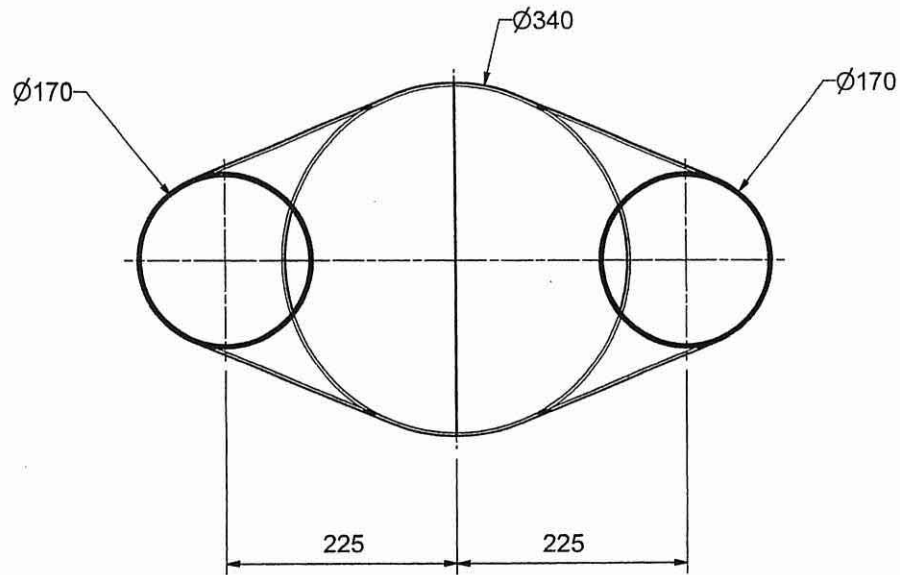


INVL\_02



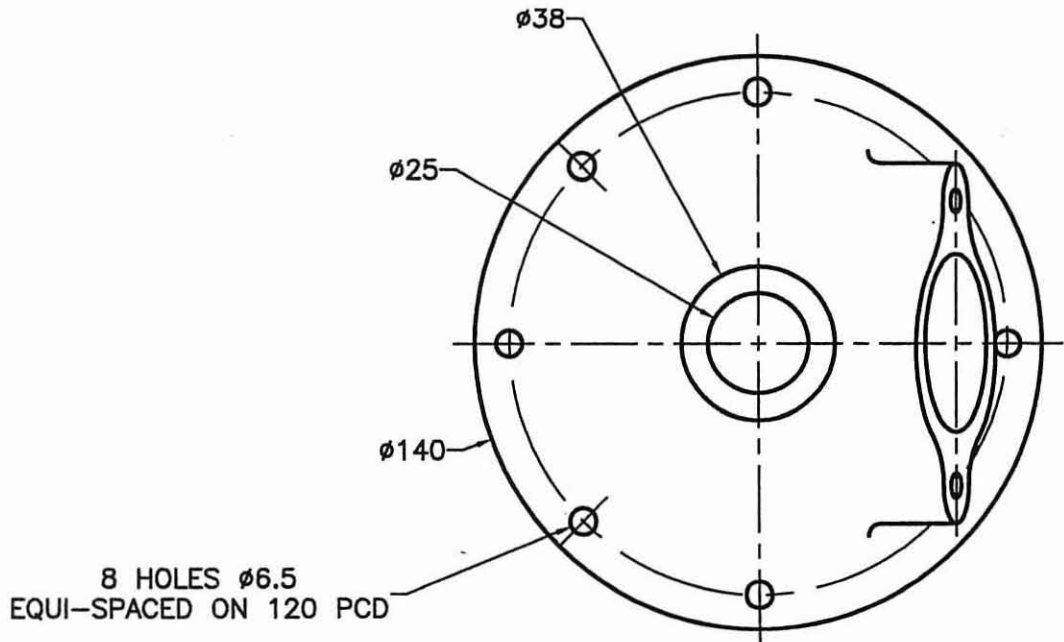
INVL\_03

MOUNT DRUITT COLLEGE OF T.A.F.E			
DETAIL DRAFTING			
	DRAWN	P.S.	TITLE
	CHECKED		LOFT EXERCISES
	DATE	23:03:03	SCALE
			DRG NUMBER
			INV_01-1

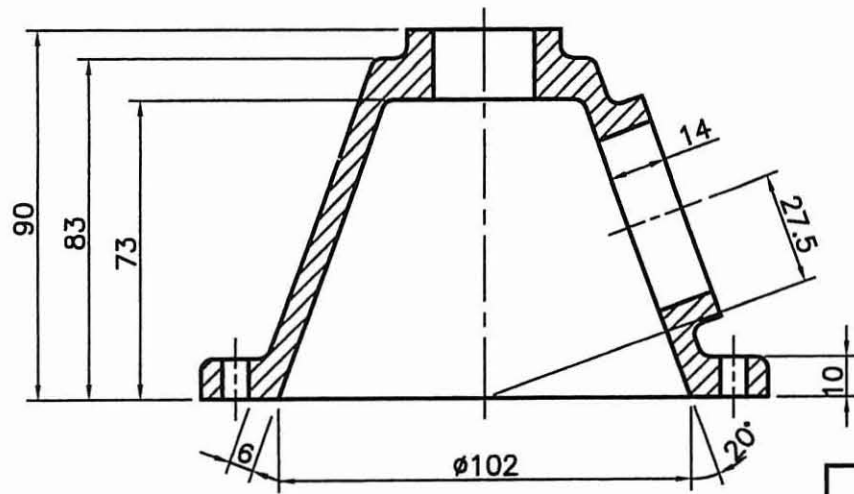
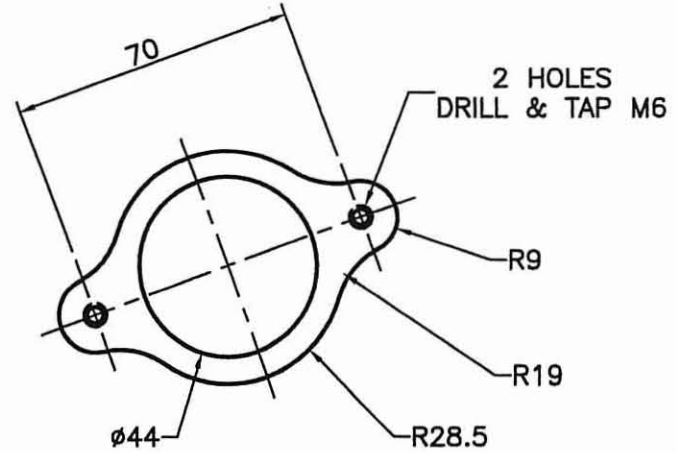


SHELL INSIDE TO 2mm

<b>MOUNT DRUITT COLLEGE OF TAFE</b> DETAIL DRAFTING			
	DRAWN	P.S.	TITLE
	CHECKED		TWO WAY BRANCH
	DATE	3:8:2004	SCALE
			DRG. NO. INV_01-2

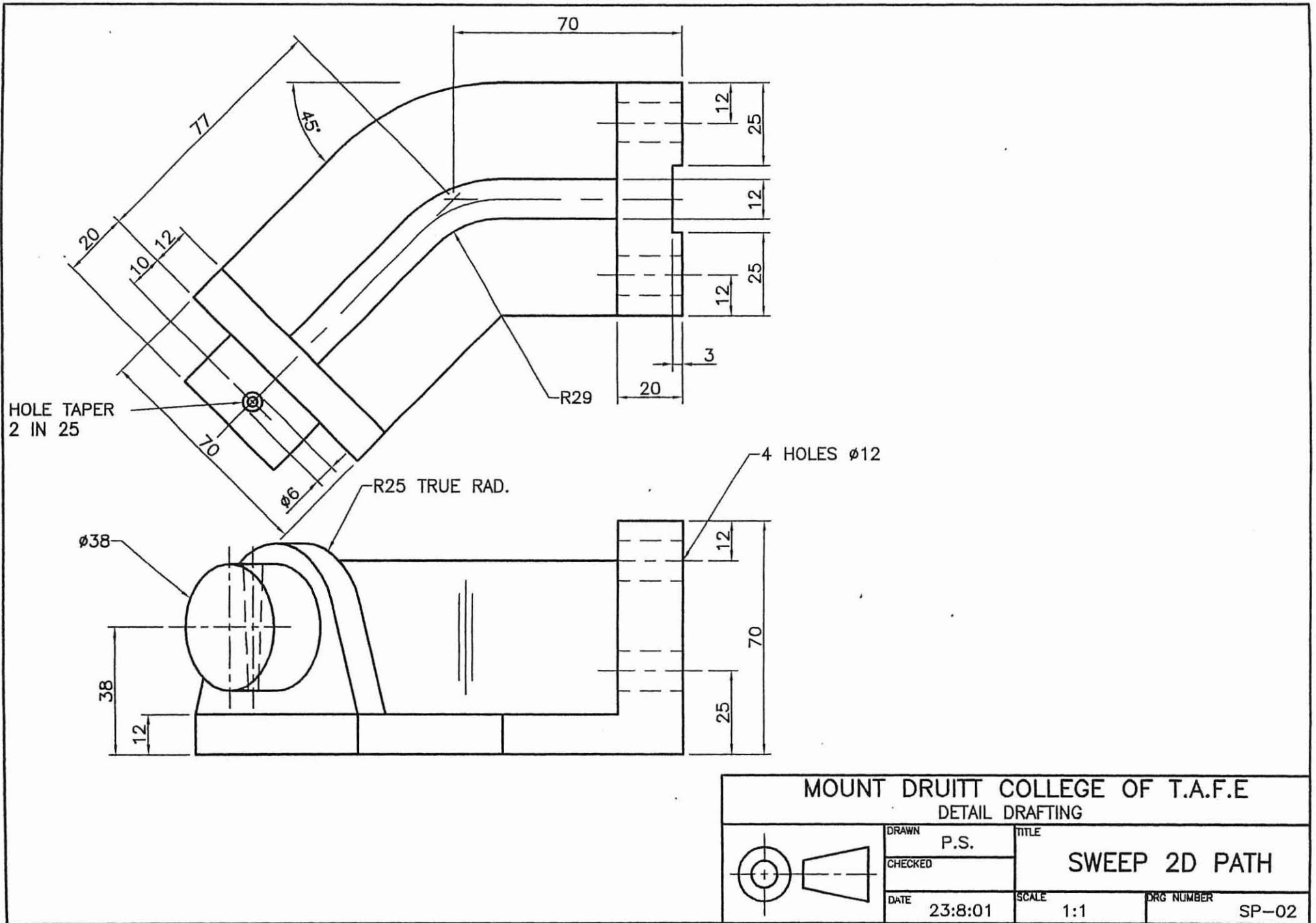


ALL FILLET RADII TO BE R3 U.N.O



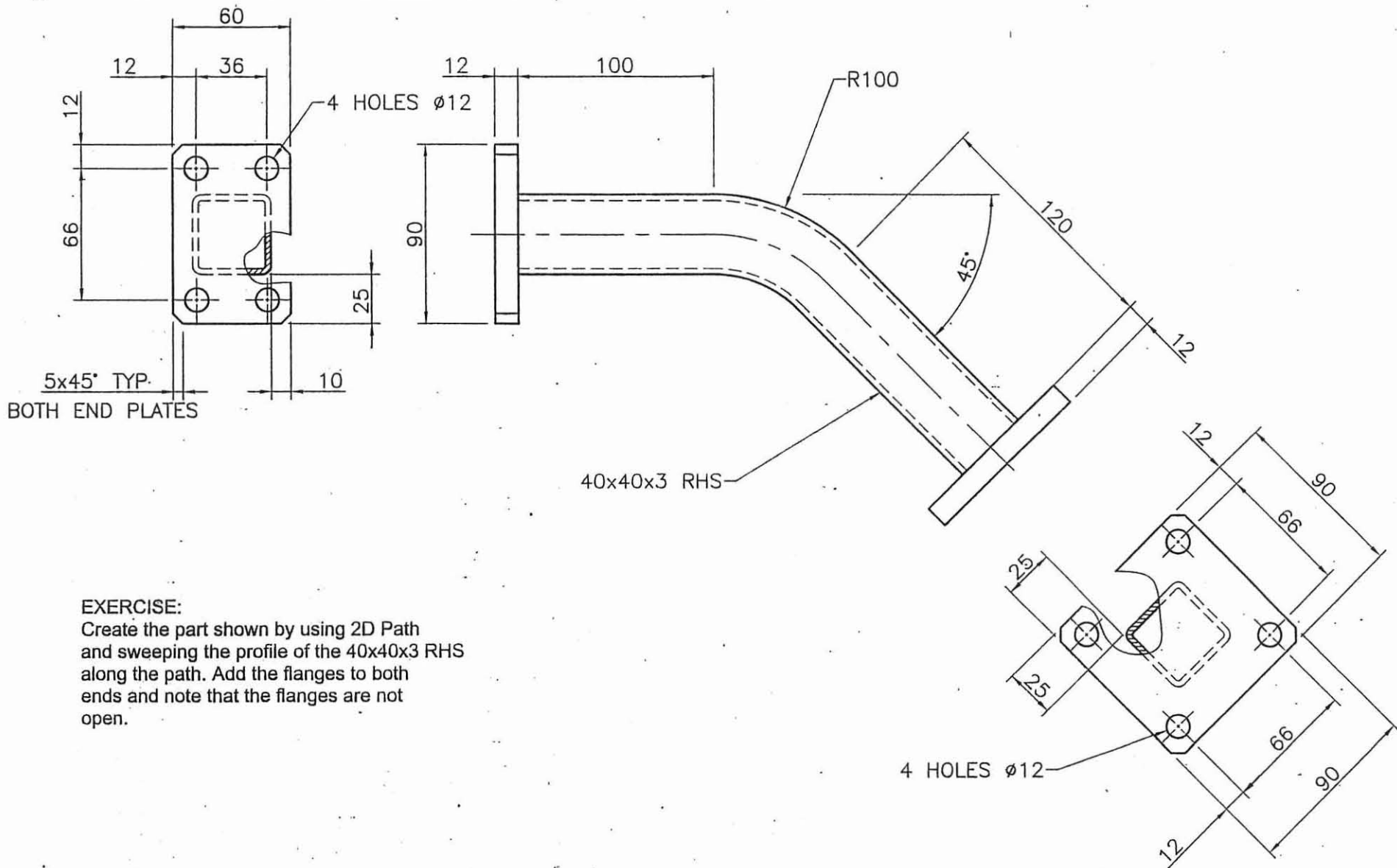
MOUNT DRUITT COLLEGE OF T.A.F.E.  
 DETAIL DRAFTING

	DRAWN	P.S.	TITLE	
	CHECKED		HOUSING COVER	
	DATE	30:8:01	SCALE	NTS
				MSH_01



MOUNT DRUITT COLLEGE OF T.A.F.E  
DETAIL DRAFTING

	DRAWN	P.S.	TITLE	
	CHECKED		SWEEP 2D PATH	
	DATE	23:8:01	SCALE	1:1
				SP-02



**EXERCISE:**  
 Create the part shown by using 2D Path  
 and sweeping the profile of the 40x40x3 RHS  
 along the path. Add the flanges to both  
 ends and note that the flanges are not  
 open.

MOUNT DRUITT COLLEGE OF T.A.F.E.			
DETAIL DRAFTING			
	DRAWN	P.S.	TITLE
	CHECKED		BRACKET
	DATE	9:4:01	SCALE
		DRG NUMBER	MD2DP-01





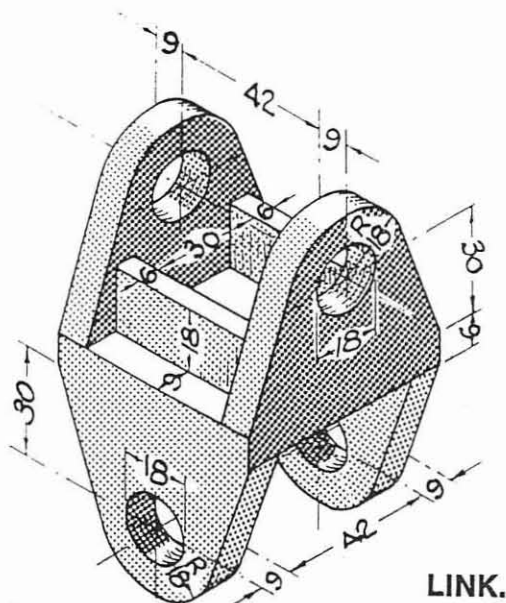
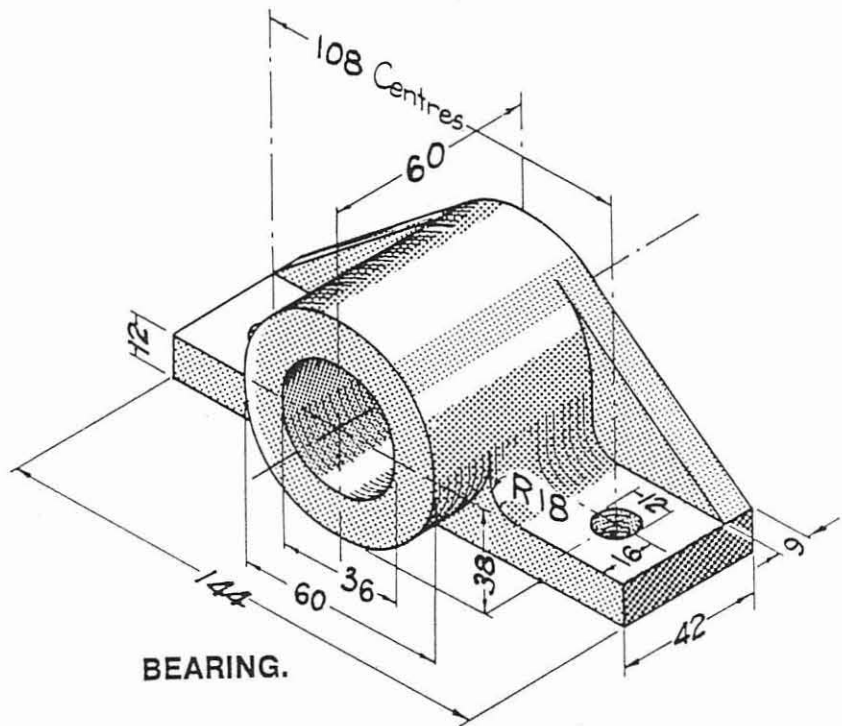
## Exercise

On separate drawings create a model of the Bearing and the Link.

Save the drawings.

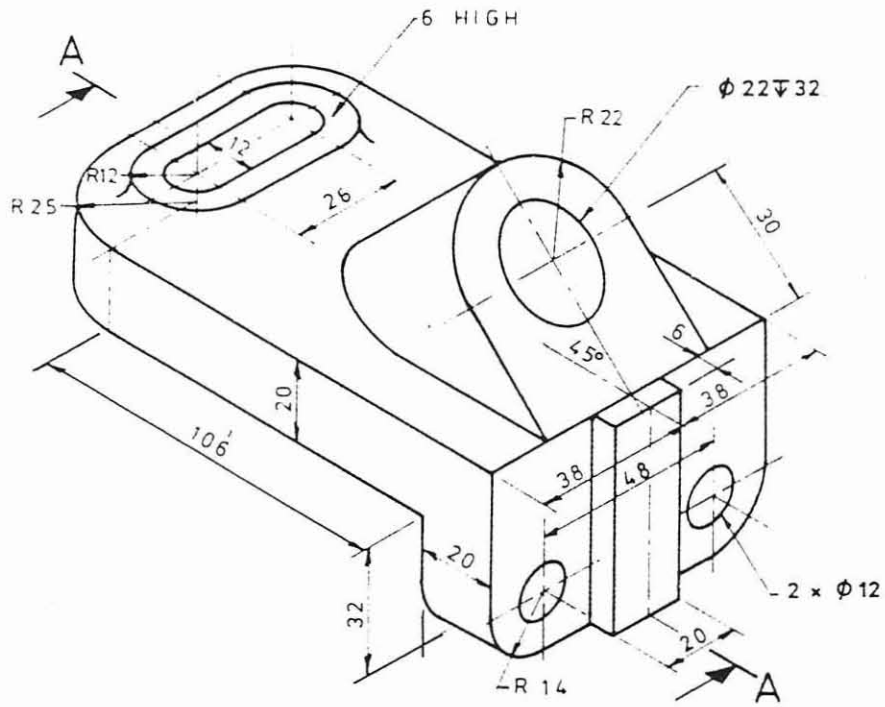
Create a detail drawing of each part consisting of at least four views of which one must be a section view and one must be an 0.7 scale isometric view.

Print each detail drawing.

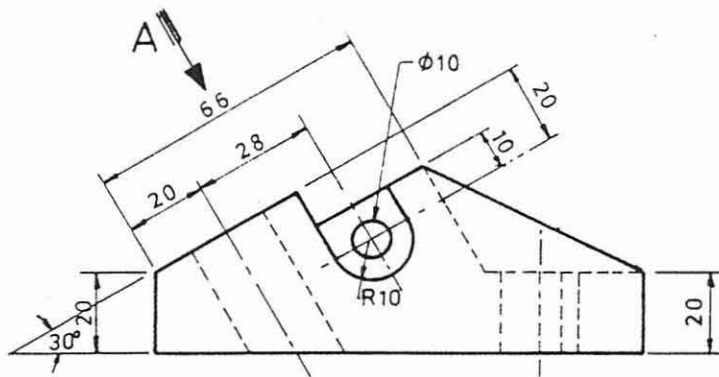
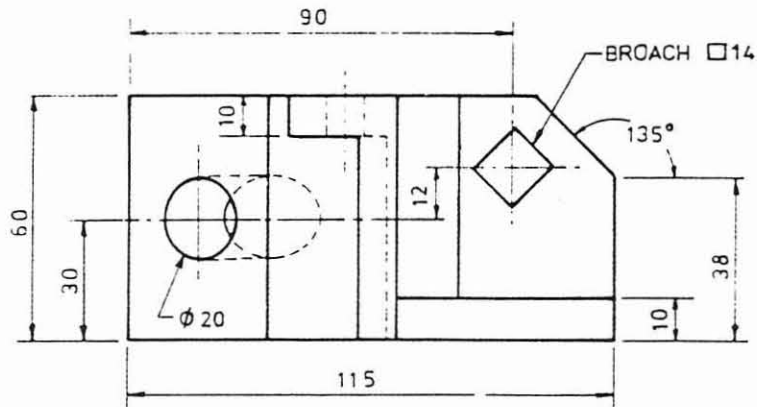


DO NOT SCALE  
ALL DIMENSIONS ARE IN MILLIMETRES

3.

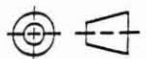


4.



**TAFE**

DETAIL DRAFTING  
MOUNT DRUITT COLLEGE



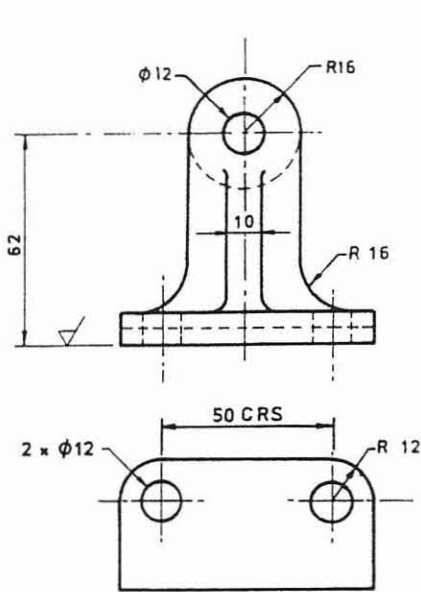
PAGE No.

INVENTOR

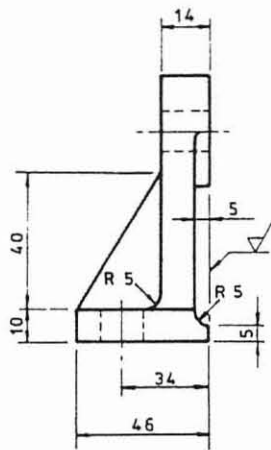




DO NOT SCALE  
ALL DIMENSIONS ARE IN MILLIMETRES



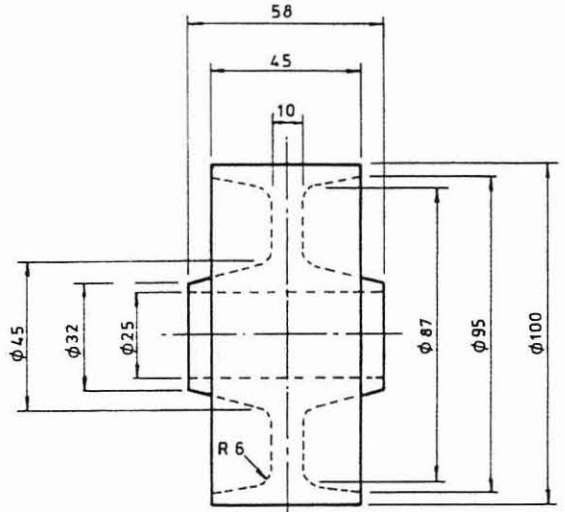
1 BRACKET  
(CI - 2 REQD)



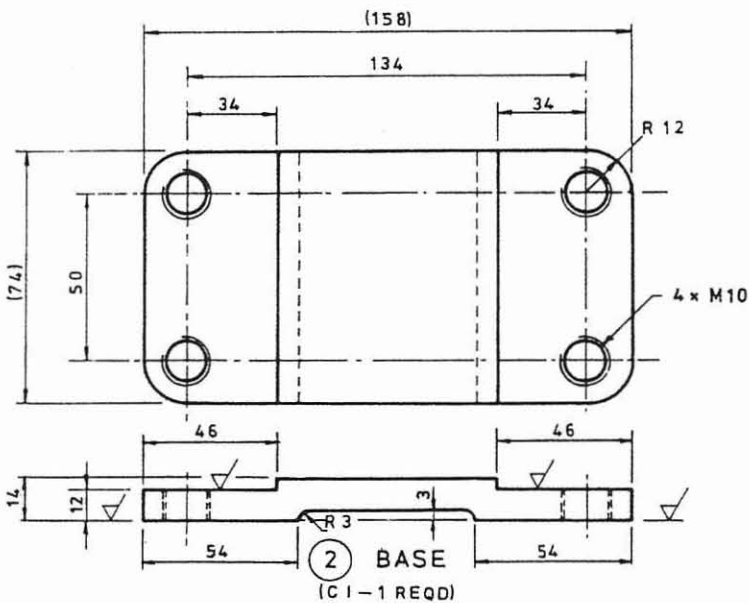
ALSO SUPPLY:

4 ONLY M10 x 1.5 HEX HD  
SET SCREWS 22 LONG

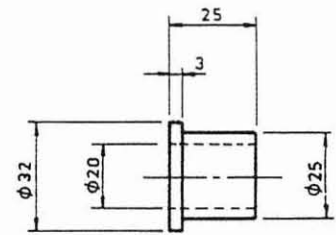
1 GREASE NIPPLE - M6



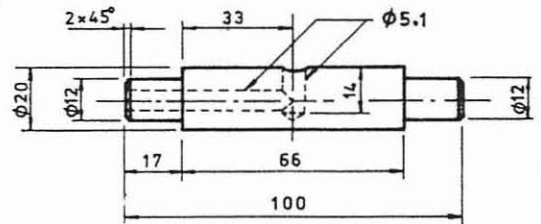
3 ROLLER  
(CI - 1 REQD)



2 BASE  
(CI - 1 REQD)



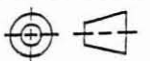
5 BUSH  
(GM - 2 REQD)



4 SPINDLE  
(BMS - 1 REQD)

TAFE

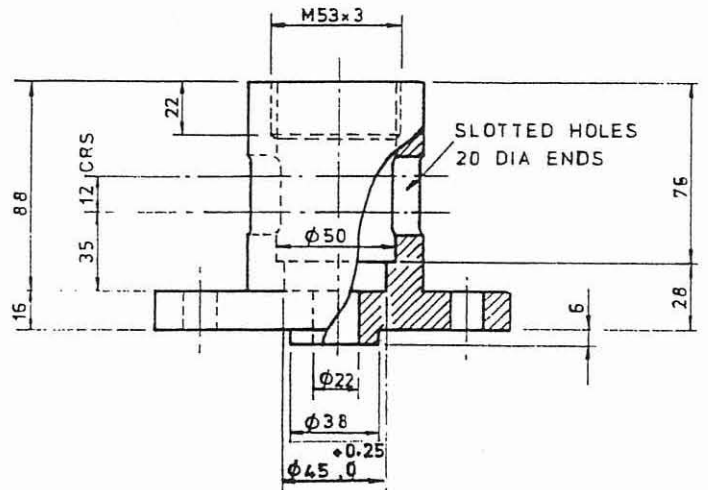
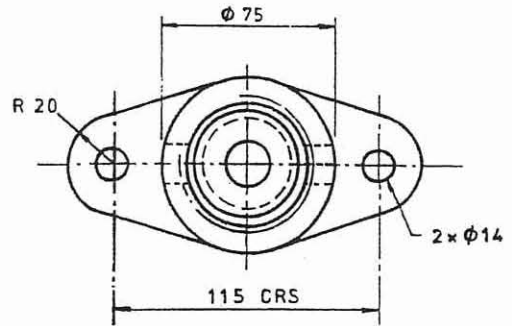
DETAIL DRAFTING  
MOUNT DRUITT COLLEGE



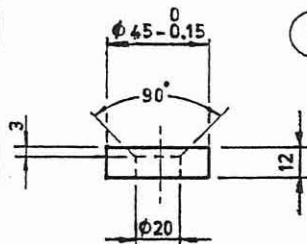
INVENTOR

PAGE No.

DO NOT SCALE  
ALL DIMENSIONS ARE IN MILLIMETRES

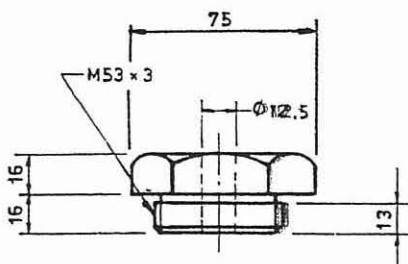


1 VALVE BODY  
(CI - 1 REQD)

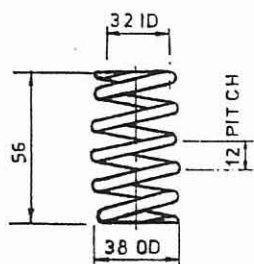


5 VALVE SEAT  
(BRS - 1 REQD)

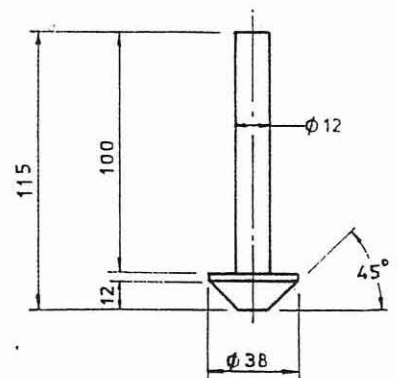
TOLERANCES  
±0.5 EXCEPT  
AS STATED



3 BODY NUT  
(BRS - 1 REQD)



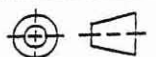
4 SPRING  
(SPR STL - 1 REQD)



2 VALVE  
(MS - 1 REQD)



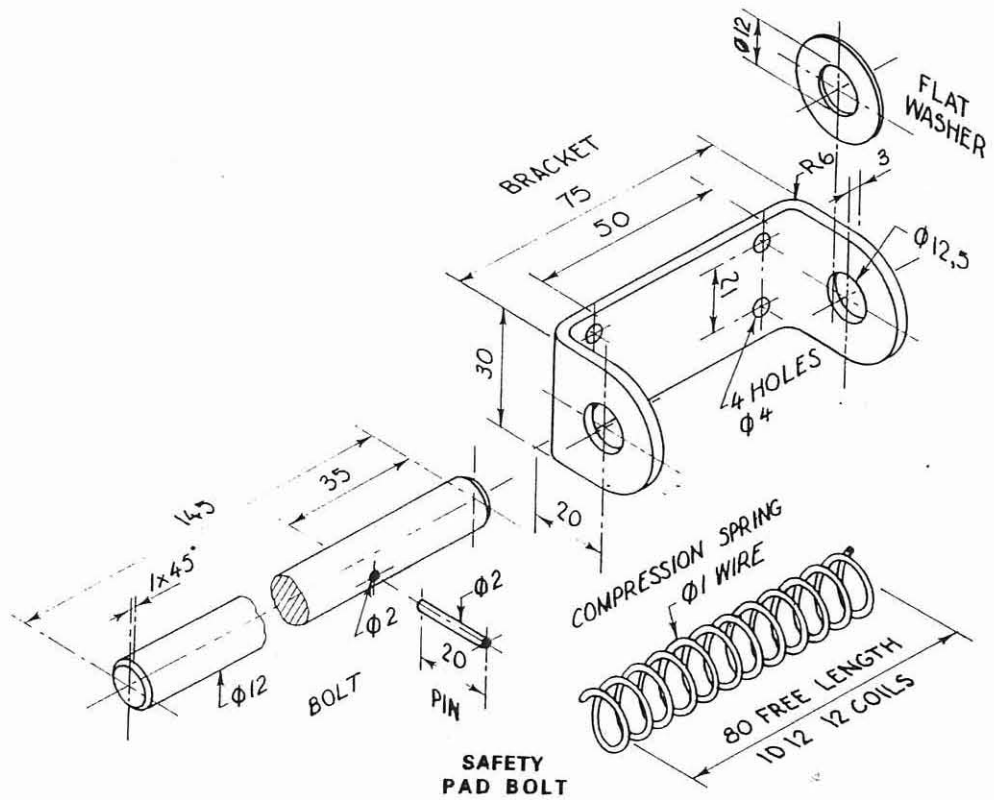
DETAIL DRAFTING  
MOUNT DRUITT COLLEGE



INVENTOR

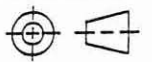
PAGE No.

DO NOT SCALE  
ALL DIMENSIONS ARE IN MILLIMETRES



**TAFE**

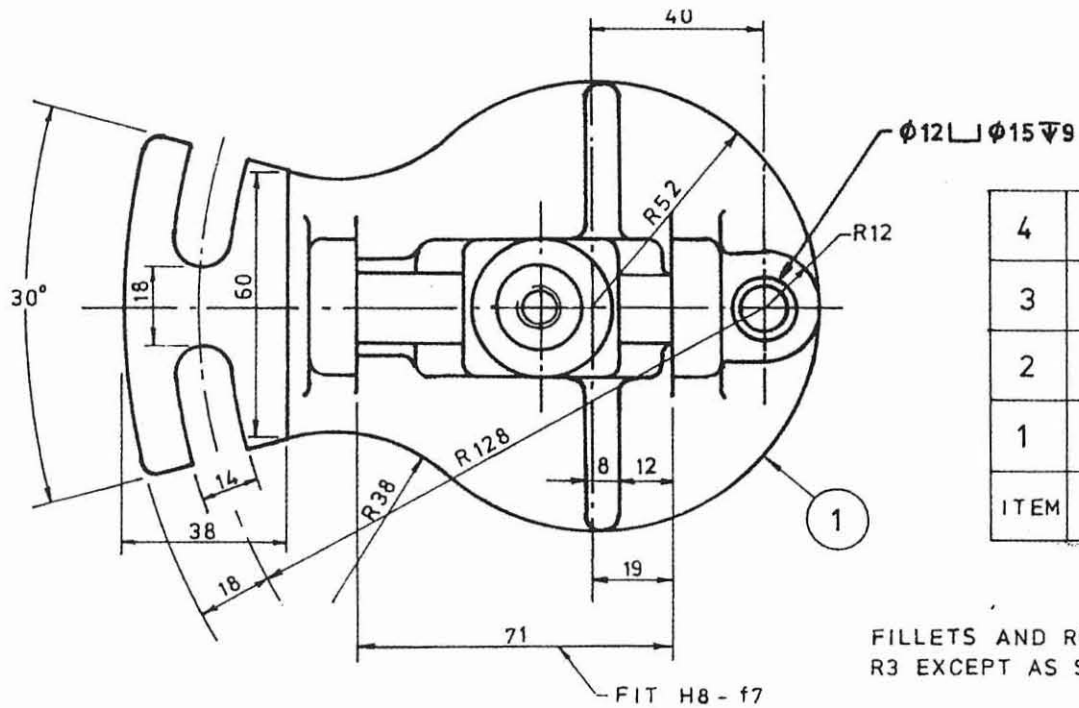
DETAIL DRAFTING  
MOUNT DRUITT COLLEGE



**INVENTOR**

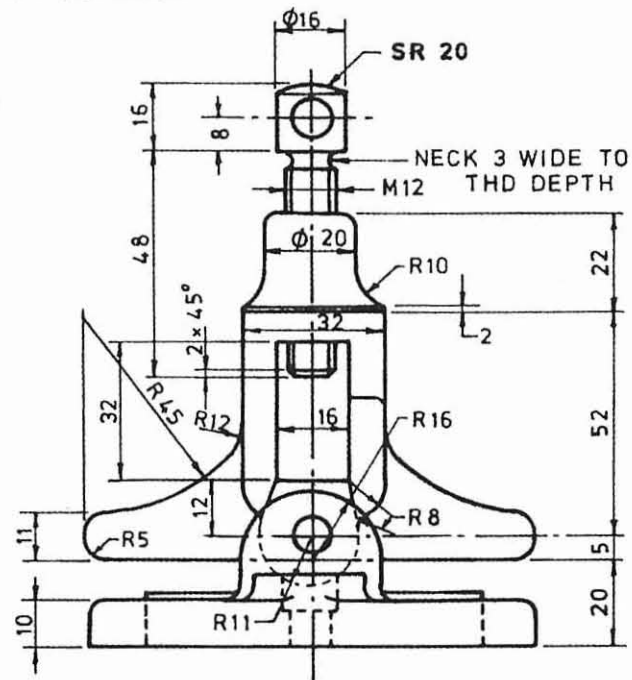
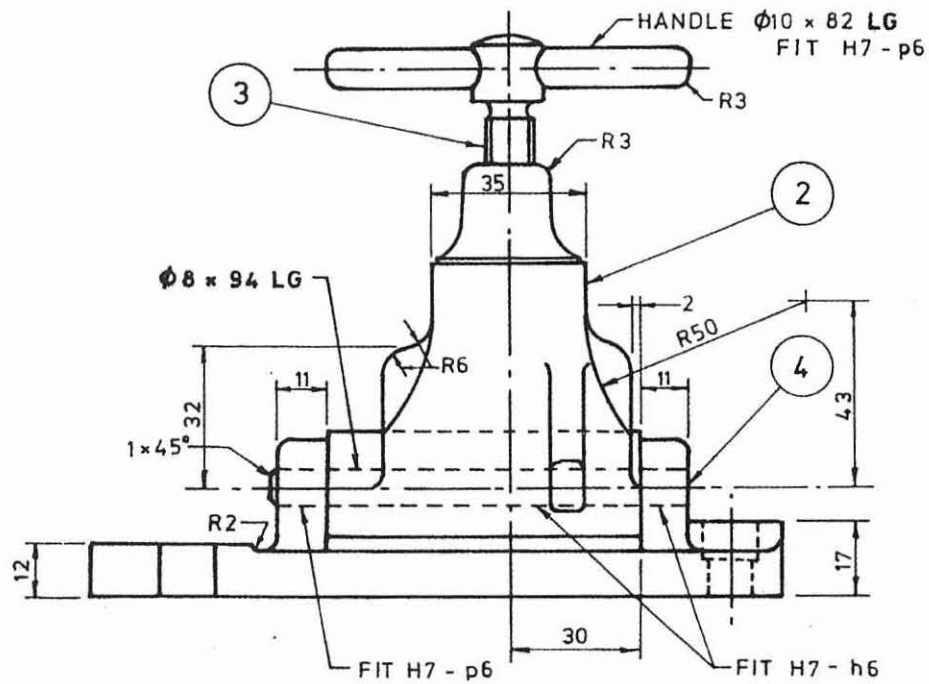
PAGE No.

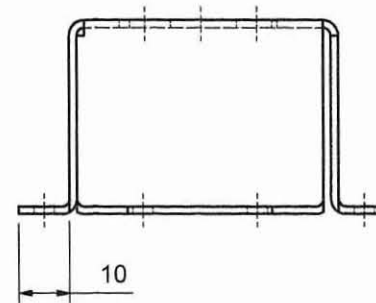
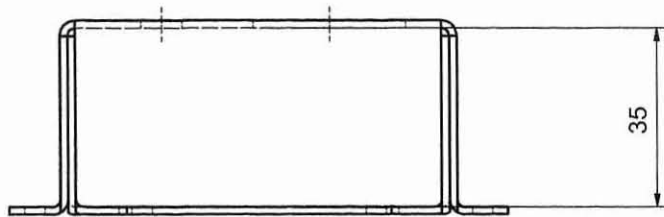
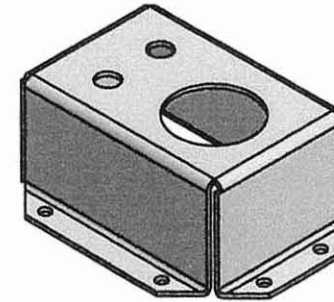
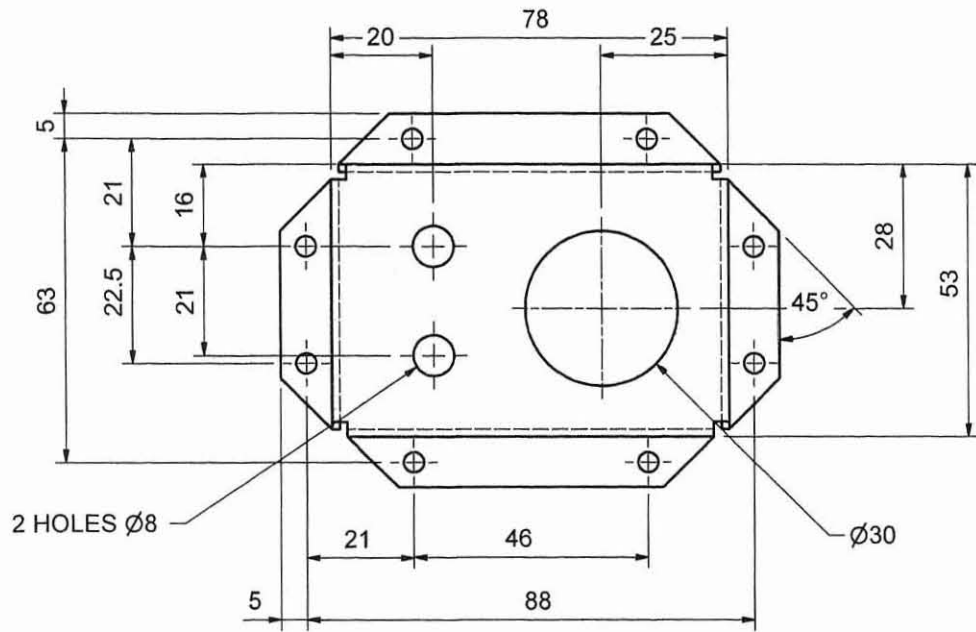




ITEM	DESCRIPTION	MATL
4	BEARING PIN	STL S1010
3	SCREW	CRS
2	HOLDER	CI
1	BASE PLATE	CI

FILLETS AND ROUNDS  
R3 EXCEPT AS SHOWN





EXERCISE: CREATE A FOLDED MODEL OF THE GAUGE BOX.  
 CREATE A FLAT PATTERN.  
 USING YOUR A3SH TEMPLATE CREATE A DRAWING SHOWING  
 FRONT AND TOP VIEWS AND INCLUDE A FLAT PATTERN.

MATERIAL: ALUMINIUM 6061 1.5mm THICK  
 BEND RADIUS TO BE 1mm WITH  
 ROUND RELIEF.

<b>MOUNT DRUITT COLLEGE OF TAFE</b> DETAIL DRAFTING			
	DRAWN	P.S.	TITLE
	CHECKED		<b>GAUGE BOX</b>
	DATE	22:11:2009	SCALE
		DRG. NO.	REV_04