

## P-7810 NUMERIC MATRIX KEYPAD

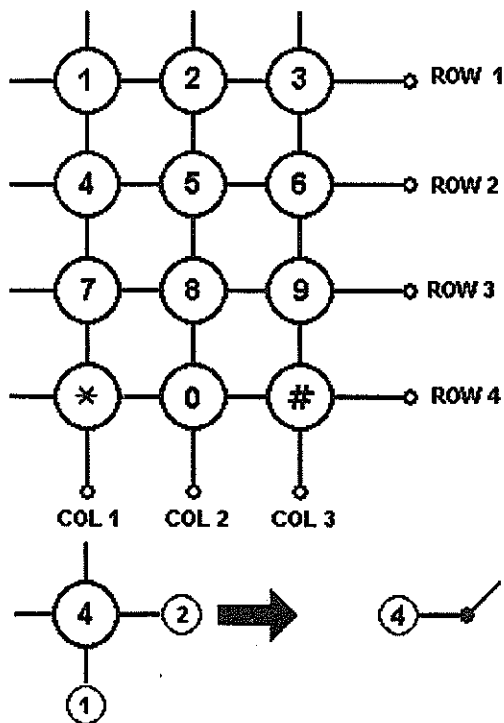
**Description:** The P-7810 Numeric Matrix Scan Keypad comprises of 12 square, double moulded white push buttons with black lettering for the numbers 1 to 9, asterisk and hash ( # ), on a plastic ABS escutcheon. The buttons are SPST push-to-make switches that operate via conductive rubber pads with a click effect providing tactile feedback. The switches are arranged in a 3 x 4, X-Y matrix.

General applications include: key-code alarm panels, robotics, telephones, remote controls, extended numeric keypad for computers, electronic code controlled locks and timing devices.

### ELECTRICAL & MECHANICAL SPECIFICATIONS

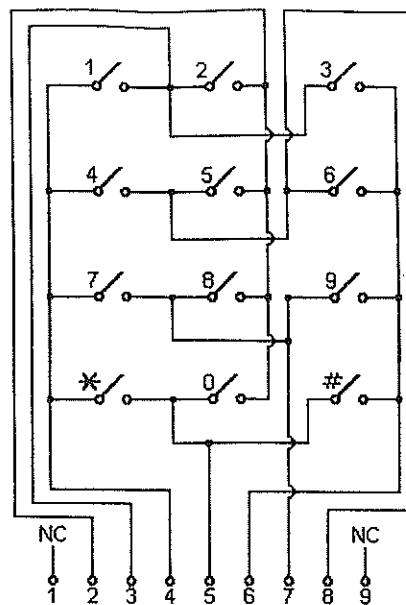
CONTACT RATING	20mA, 24VDC (Maximum)
CONTACT RESISTANCE	200 Ohms (Maximum)
ACTUATING FORCE	100 ± 30 Grams
STROKE	1.5 ± 0.5mm
CONTACT BOUNCE	5mS (Maximum)
CONTACT LIFE EXPECTANCY	1 Million Cycles Per Key
OPERATING TEMPERATURE	-20°C to +60°C
STORAGE TEMPERATURE	-40°C to +65°C

### STANDARD CIRCUIT DIAGRAM 3 X 4 MATRIX COORDINATES



OUTPUT PIN ARRANGEMENT	
OUTPUT PIN NO.	MATRIX
1	NC
2	COLUMN 2
3	ROW 1
4	COLUMN 1
5	ROW 4
6	COLUMN 3
7	ROW 3
8	ROW 2

## INTERNAL CIRCUIT DIAGRAM



Note: Pins 1 & 9 are Not Connected.  
Pin 9 may not be supplied on some keypads.  
Pin 1 is always normally supplied on the PCB.

## PHYSICAL DIMENSIONS AND MEASUREMENTS

